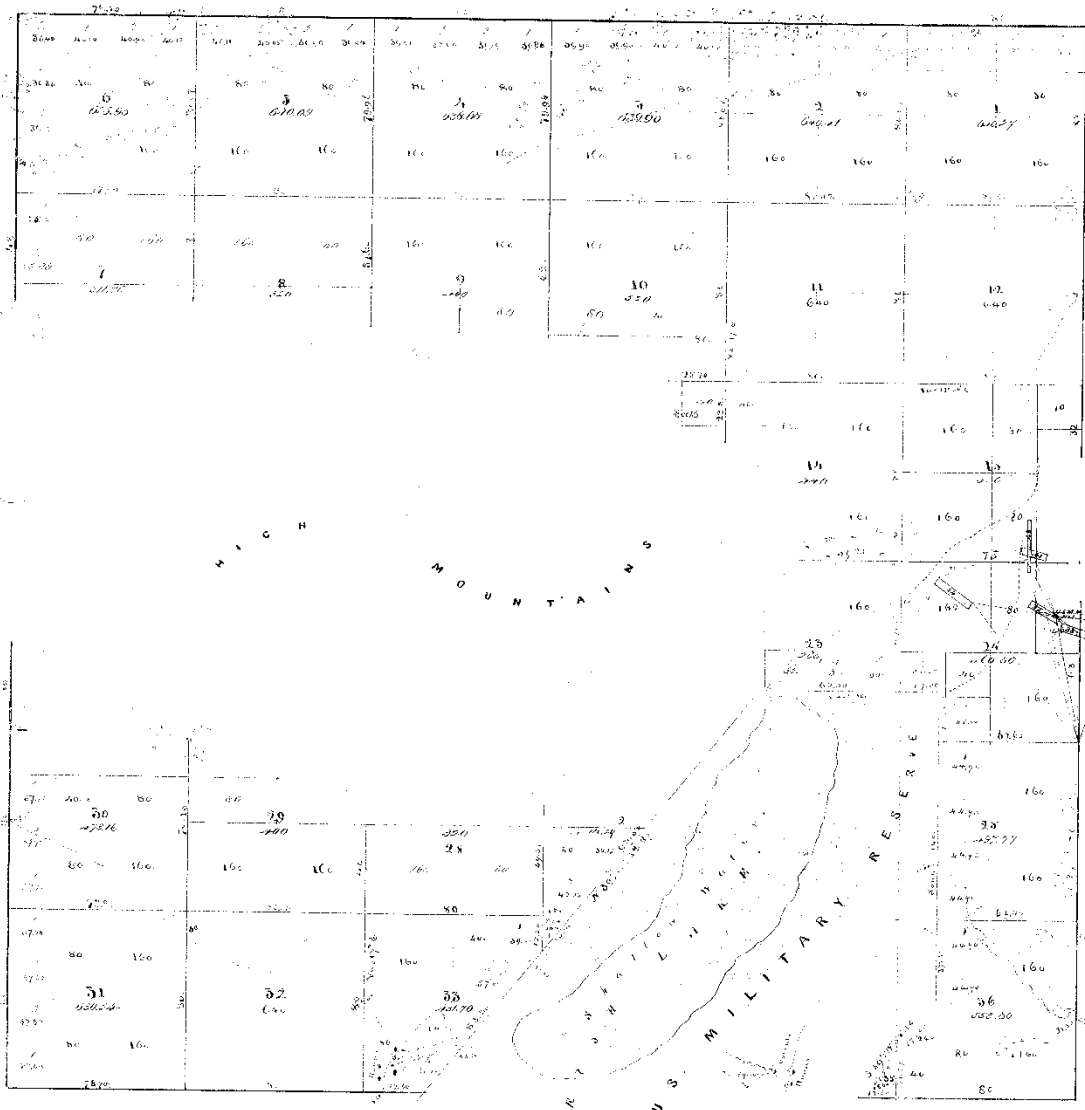


T. 4 S., R. 4 W., SLM, UT

SECTION 7 AND 8, OVERLAP &
HIATUS, TOOELE COUNTY

CASE STUDY ISSUES

- Junior – Senior Surveys
- Overlap
- Hiatus
- Bona Fide Rights
- Public Domain vs. Acquired Lands
- Local Control
- Local Surveyor vs. Federal Authority



Notes
 N. Bdy. 57 211
 S. " " 57 211.304
 E. " " 57 26 211.441
 W. " " 57 211
 Subs. 14 60 211.334
 Plat. Bound.
 Extra
 Subs. 10 2 60 25 60 13 60 8 20
 (20 25 60 20)

Surveyor General's Office
 Great Salt Lake Co. 27 1/2 1890

The above map, showing the boundaries of the land in the section, is true and correct. The plat and the map are true and correct and will have legal effect and support.

W. H. H. H.

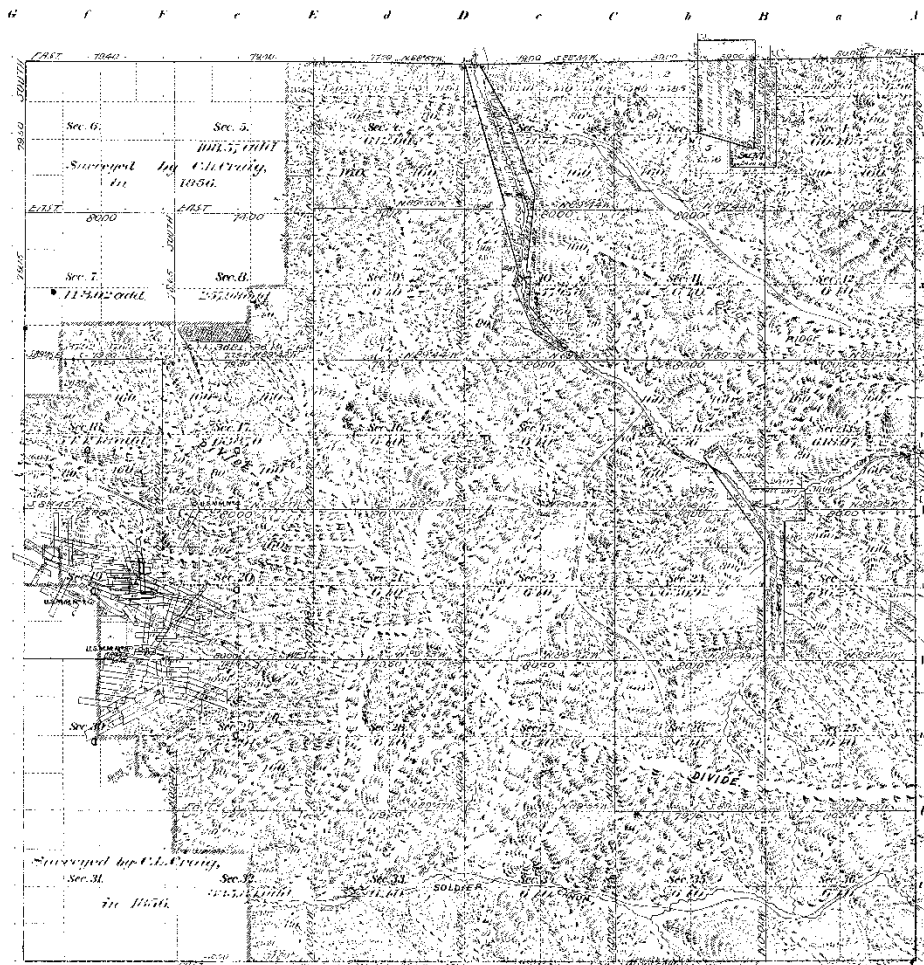
Surveyor General's Office

Sub. 12 1120 12 57 1/2 1890

Surveyor General's Office	By	Sub.	Acres	Value
North Boundary	W. H. H. H.	Sub. 12 1120	0.78 20	12 57 1/2
East Boundary	do	do	4.08 00	do
Section Bound.	do	do	50.07 77	do
North West	do	do	6.25 37	do
Boundary of Section	do	do	2.47 47	do

Stewart 1896

Township N^o 4 South Range N^o 4 West of the Salt Lake Base & Meridian



This is the same as the original survey of claims as shown on the plat and return on record in the office of the Surveyor General of Utah & Salt Lake Sept. 11th 1895.

Township N ^o 4 South		Range N ^o 4 West		Total number of acres		Bureau of Geographical Names	
Section	Acres	Section	Acres	Section	Acres	Section	Acres
1	3600	17	3600	17	3600	17	3600
2	3600	18	3600	18	3600	18	3600
3	3600	19	3600	19	3600	19	3600
4	3600	20	3600	20	3600	20	3600
5	3600	21	3600	21	3600	21	3600
6	3600	22	3600	22	3600	22	3600
7	3600	23	3600	23	3600	23	3600
8	3600	24	3600	24	3600	24	3600
9	3600	25	3600	25	3600	25	3600
10	3600	26	3600	26	3600	26	3600
11	3600	27	3600	27	3600	27	3600
12	3600	28	3600	28	3600	28	3600
13	3600	29	3600	29	3600	29	3600
14	3600	30	3600	30	3600	30	3600
15	3600	31	3600	31	3600	31	3600
16	3600	32	3600	32	3600	32	3600
17	3600	33	3600	33	3600	33	3600
18	3600	34	3600	34	3600	34	3600
19	3600	35	3600	35	3600	35	3600
20	3600	36	3600	36	3600	36	3600

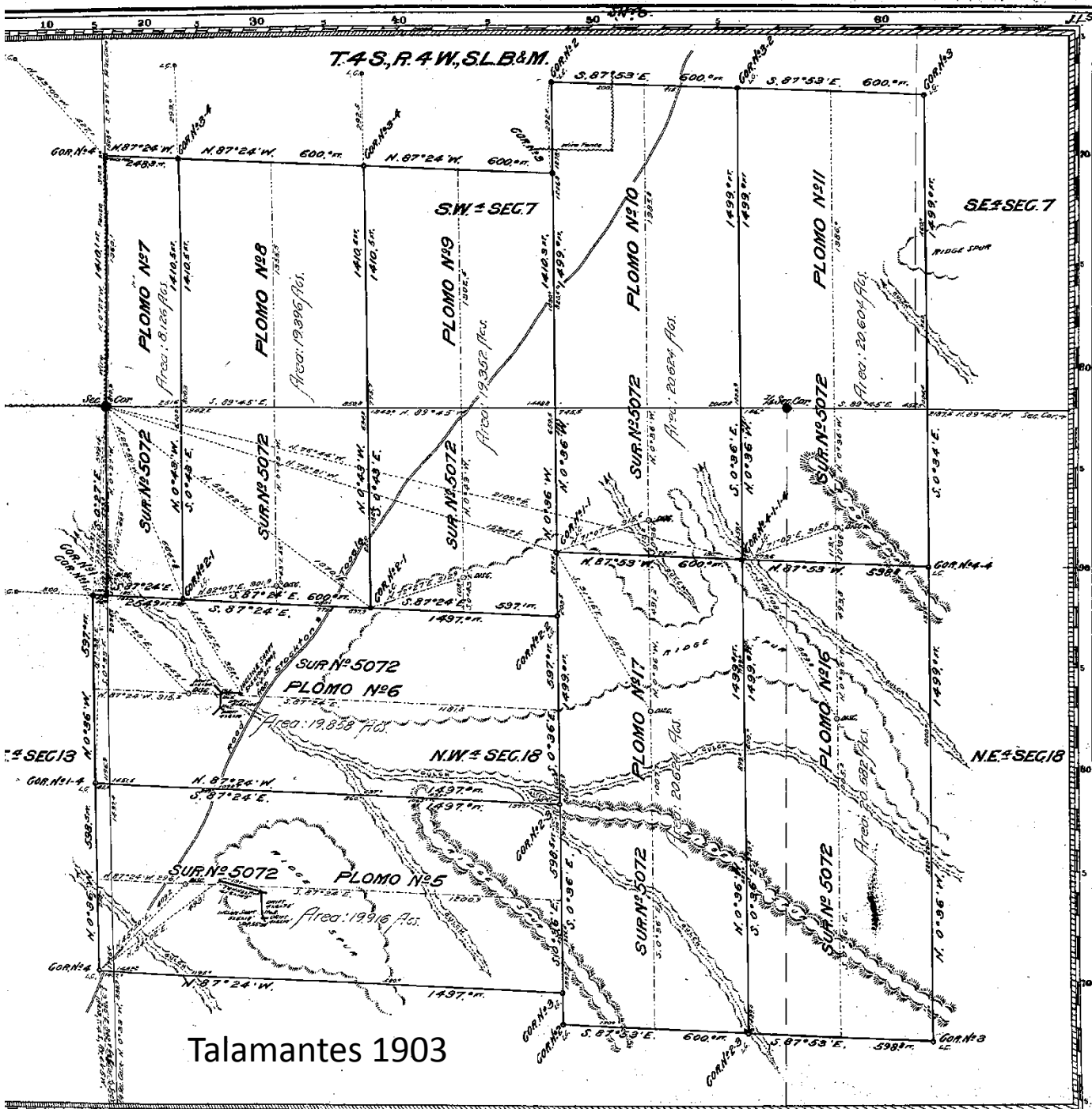
FRESH VALLEY MINING DISTRICT.

MINING CLAIMS		MINING CLAIMS		ACRES IN SEC. 20	
No.	Name	No.	Name	Lot No.	Acres
41	DeFrance	119	Foot Hill No. 1	1	36.00
42	McKee & Co.	120	Chert	2	37.00
43	Montgomery	121	Coal Hill	3	36.00
44	McKee & Co.	122	Alloy	4	36.00
45	McKee & Co.	123	Old Ben's	5	36.00
46	Continental	124	Widley	6	36.00
47	King of Kings	125	Alloy Hill	7	36.00
48	Whitely	126	Stonewall	8	36.00
49	Wagner	127	Stonewall No. 2	9	36.00
50	Stonewall No. 1	128	Stonewall	10	36.00
51	Quincy	129	Stonewall	11	36.00
52	Quincy	130	Stonewall	12	36.00
53	Quincy	131	Stonewall	13	36.00
54	Quincy	132	Stonewall	14	36.00
55	Quincy	133	Stonewall	15	36.00
56	Quincy	134	Stonewall	16	36.00
57	Quincy	135	Stonewall	17	36.00
58	Quincy	136	Stonewall	18	36.00
59	Quincy	137	Stonewall	19	36.00
60	Quincy	138	Stonewall	20	36.00
61	Quincy	139	Stonewall	21	36.00
62	Quincy	140	Stonewall	22	36.00
63	Quincy	141	Stonewall	23	36.00
64	Quincy	142	Stonewall	24	36.00
65	Quincy	143	Stonewall	25	36.00
66	Quincy	144	Stonewall	26	36.00
67	Quincy	145	Stonewall	27	36.00
68	Quincy	146	Stonewall	28	36.00
69	Quincy	147	Stonewall	29	36.00
70	Quincy	148	Stonewall	30	36.00
71	Quincy	149	Stonewall	31	36.00
72	Quincy	150	Stonewall	32	36.00
73	Quincy	151	Stonewall	33	36.00
74	Quincy	152	Stonewall	34	36.00
75	Quincy	153	Stonewall	35	36.00
76	Quincy	154	Stonewall	36	36.00

The above map of Township N^o 4 South of Range N^o 4 West of the Salt Lake Base & Meridian is hereby confirmed to the field notes of the survey thereof on file in this office, which has been examined and approved.

Surveyor General's Office,
 Salt Lake City, Utah,
 July 12th 1896.

This is the same as the original survey of claims as shown on the plat and return on record in the office of the Surveyor General of Utah & Salt Lake Sept. 11th 1895.



Talamantes 1903

Claim Located January 1st 1903
 Mineral Survey No 5072
Utah Land Dist
PLAT
 OF THE CLAIM OF
Matthew T. Gisborn
 KNOWN AS THE
PLOMO No. 5, PLOMO No. 6, PLOMO No. 7,
PLOMO No. 8, PLOMO No. 9, PLOMO No. 10,
PLOMO No. 11, PLOMO No. 16, & PLOMO No. 17.
 IN Brush Valley MINING DISTRICT
Tooele COUNTY, Utah
 Containing an Area of 169.082 A.
 Scale of 300 Feet to the inch.
 Variation 16.45 East
 SURVEYED July 5-9 1903
Alfredo P. Talamantes
 U.S. Deputy Mineral Surveyor

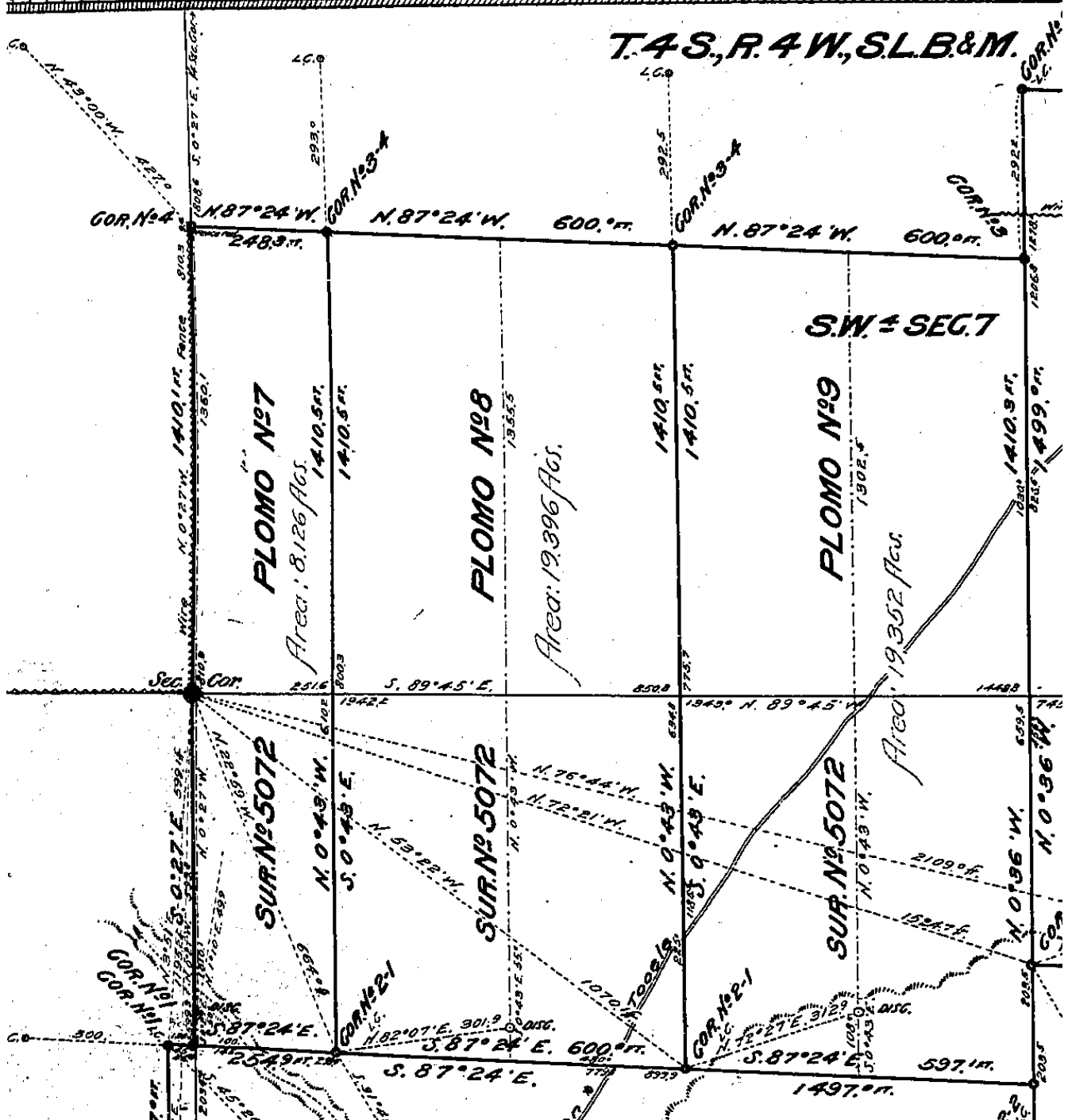
The Original Field Notes of the Survey of the Mining Claim
Matthew T. Gisborn
 known as the
PloMO No. 5; PloMO No. 6; PloMO No. 7;
PloMO No. 8; PloMO No. 9; PloMO No. 10;
PloMO No. 11; PloMO No. 16, and PloMO No. 17
 Lodes

from which this plat has been made under my direct
 have been examined and approved, and are on file in this
 and I hereby certify that they furnish such an accurate des-
 tion of said Mining Claim, as will, if incorporated into a pe-
 serve fully to identify the premises, and that such refer-
 is made therein to natural objects or permanent monum-
 as will perpetuate and fix the locus thereof.
 I further certify that Five Hundred Dollars worth of labor
 been expended, or improvements made upon, said Min-
 Claim by claimant or his grantors, and
 said improvements consist of two incline shafts and five
drifts as described in the field notes.

that the location of said improvements is correctly sh-
 upon this plat, and that no portion of said labor or im-
 provements has been included in the estimate of expe-
 tures upon any other claim.
 And I further certify that this is a correct plat of said
 Claim made in conformity with said original field notes,
 survey thereof, and the same is hereby approved.

U.S. Surveyor General's Office. Edward H. Audell
Salt Lake City, Utah U.S. Surveyor General for
December 26th, 1903 Utah

T.4S., R.4W., S.L.B.&M.



PLOMO N°7

Area: 8,126 Acs.
1410.5 ft.
1410.5 ft.

PLOMO N°8

Area: 19,396 Acs.

PLOMO N°9

Area: 19,352 Acs.

SUR. N°5072

SUR. N°5072

SUR. N°5072

S.W. 1/4 SEC. 7

COR. N°4

COR. N°3-4

COR. N°3-4

COR. N°3

Sec. Cor.

COR. N°2-1

COR. N°2-1

COR. N°2

COR. N°1-1
COR. N°1-2

N. 87° 24' W. 248.9 ft.

N. 87° 24' W. 600.0 ft.

N. 87° 24' W. 600.0 ft.

N. 87° 24' W. 600.0 ft.

S. 89° 45' E. 1448.8 ft.

S. 89° 45' E. 1448.8 ft.

S. 89° 45' E. 1448.8 ft.

S. 89° 45' E. 1448.8 ft.

S. 87° 24' E. 600.0 ft.

S. 87° 24' E. 600.0 ft.

S. 87° 24' E. 600.0 ft.

S. 87° 24' E. 600.0 ft.

N. 43° 00' W. 422.0 ft.

N. 0° 27' W. 1410.1 ft.

N. 0° 43' W. 1410.5 ft.

N. 0° 27' W. 1410.5 ft.

L.C.

L.C.

L.C.

2516

19422

2549 ft.

8003

8003

6102

6102

19422

19422

8508

8508

775.7

775.7

6040

6040

1349.0

1349.0

1448.8

1448.8

1448.8

1448.8

659.5

659.5

742

742

2008

2008

2008

2008

2008

2008

2008

2008

2008

2008

2008

2008

2008

2008

2008

2008

2008

2008

2008

2008

2008

2008

2008

2008

2008

2008

2008

2008

2008

2008

2008

2008

2008

2008

2008

2008

2008

2008

2008

2008

2008

2008

2008

2008

2008

2008

2008

2008

2008

2008

2008

2008

2008

2008

2008

2008

2008

2008

2008

2008

2008

2008

2008

2008

2008

2008

2008

2008

2008

2008

2008

2008

2008

2008

2008

2008

2008

2008

2008

2008

2008

2008

2008

2008

2008

2008

2008

2008

2008

2008

2008

2008

2008

2008

2008

2008

2008

2008

2008

2008

2008

2008

2008

2008

2008

2008

2008

2008

2008

2008

2008

2008

2008

2008

2008

2008

2008

2008

2008

2008

2008

2008

2008

2008

2008

2008

2008

2008

2008

2008

2008

2008

2008

2008

2008

2008

2008

2008

2008

2008

2008

2008

2008

2008

2008

2008

2008

2008

2008

2008

2008

2008

2008

2008

2008

2008

2008

2008

2008

2008

2008

2008

2008

2008

2008

2008

2008

2008

2008

2008

2008

2008

2008

2008

2008

2008

2008

2008

2008

2008

2008

2008

2008

2008

2008

2008

2008

2008

2008

2008

2008

2008

2008

2008

2008

2008

2008

2008

2008

2008

2008

2008

2008

2008

2008

2008

2008

2008

2008

2008

2008

2008

2008

2008

2008

2008

2008

2008

2008

2008

2008

2008

2008

2008

2008

2008

2008

2008

2008

2008

2008

2008

2008

2008

2008

2008

2008

2008

2008

2008

2008

2008

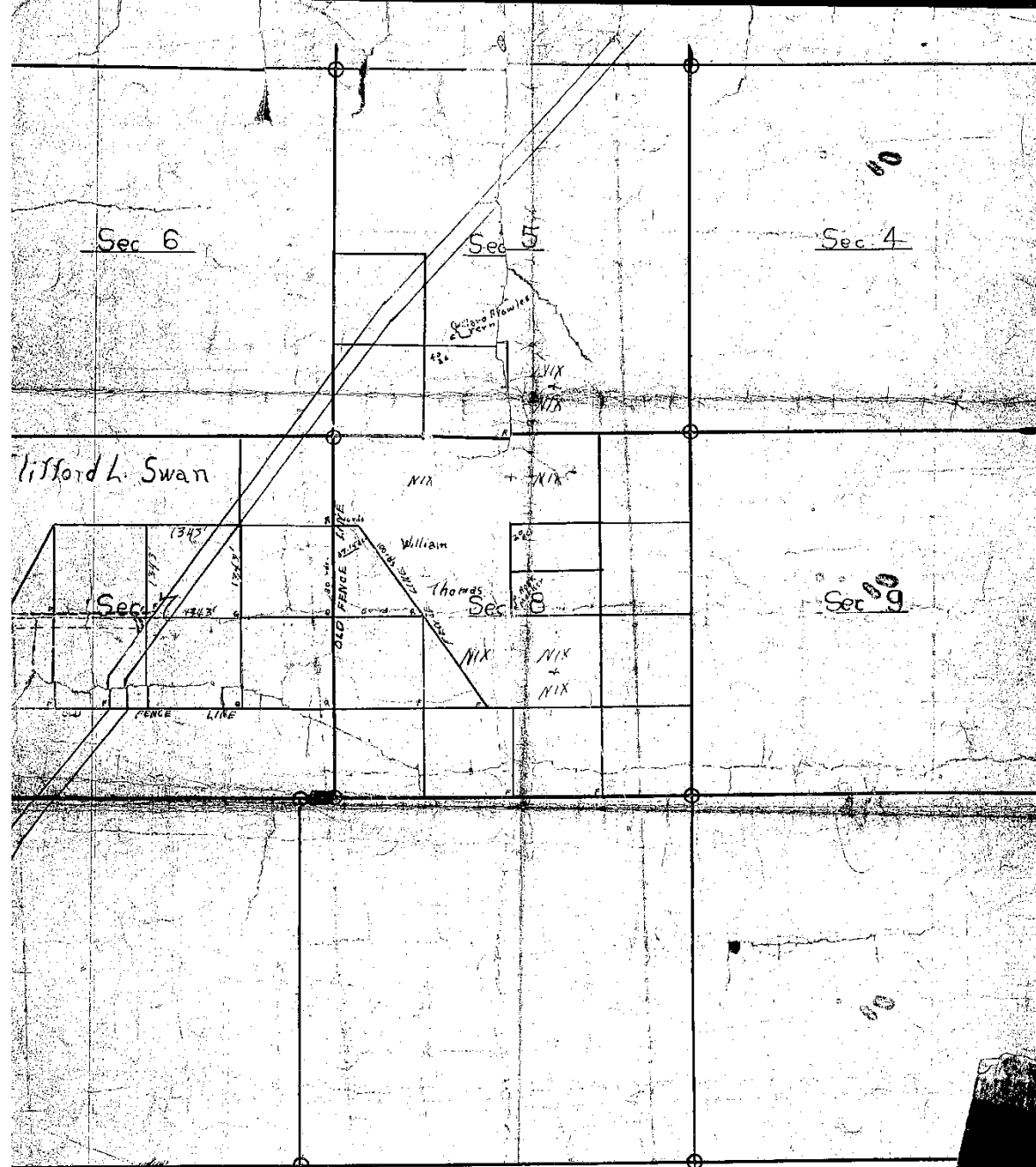
2008

2008

2008

2008





Sec 6

Sec 5

Sec 4

Lifford L. Swan

Sec 7

Sec 8

Sec 9

One In. = 20 ch. or 80 rds
 22 Yds = One ch

One Rod = 5 1/2 Yds or
 80 Acds = 1320

Lifford L. Swan

William Row
Farm

40
36

NIX
+
NIX

NIX

+ NIX

OLD FENCE LINE

William

Thomas

Sec 7

Sec 8

NIX

NIX
+
NIX

FENCE LINE

1345'

1343'

1343'

1343'

80 yds

85 yds

100 yds

200

200

200
200

SW

F

F

F

F

F

F

F

F

F

F

F

F

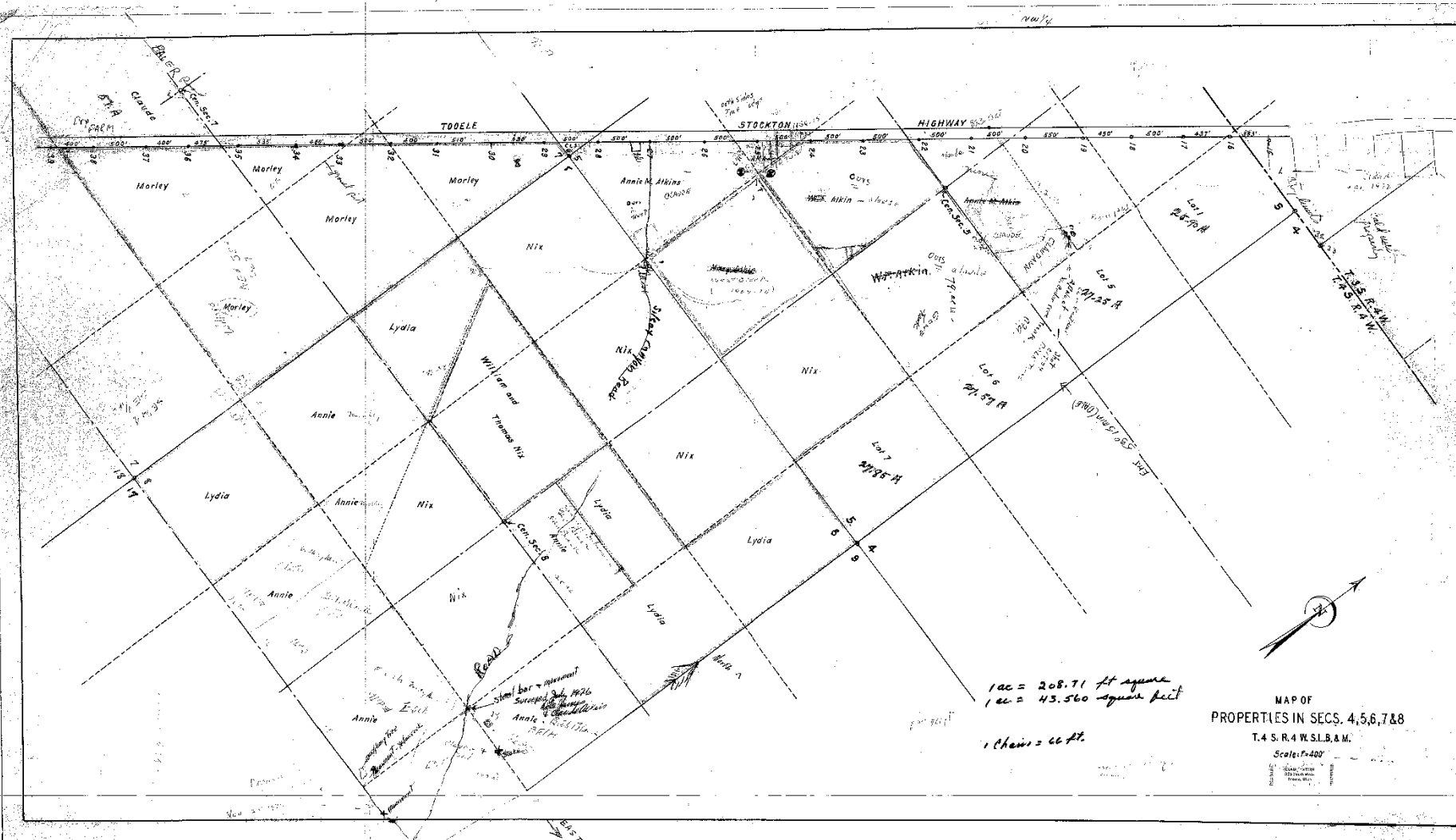
F

F





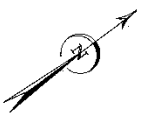


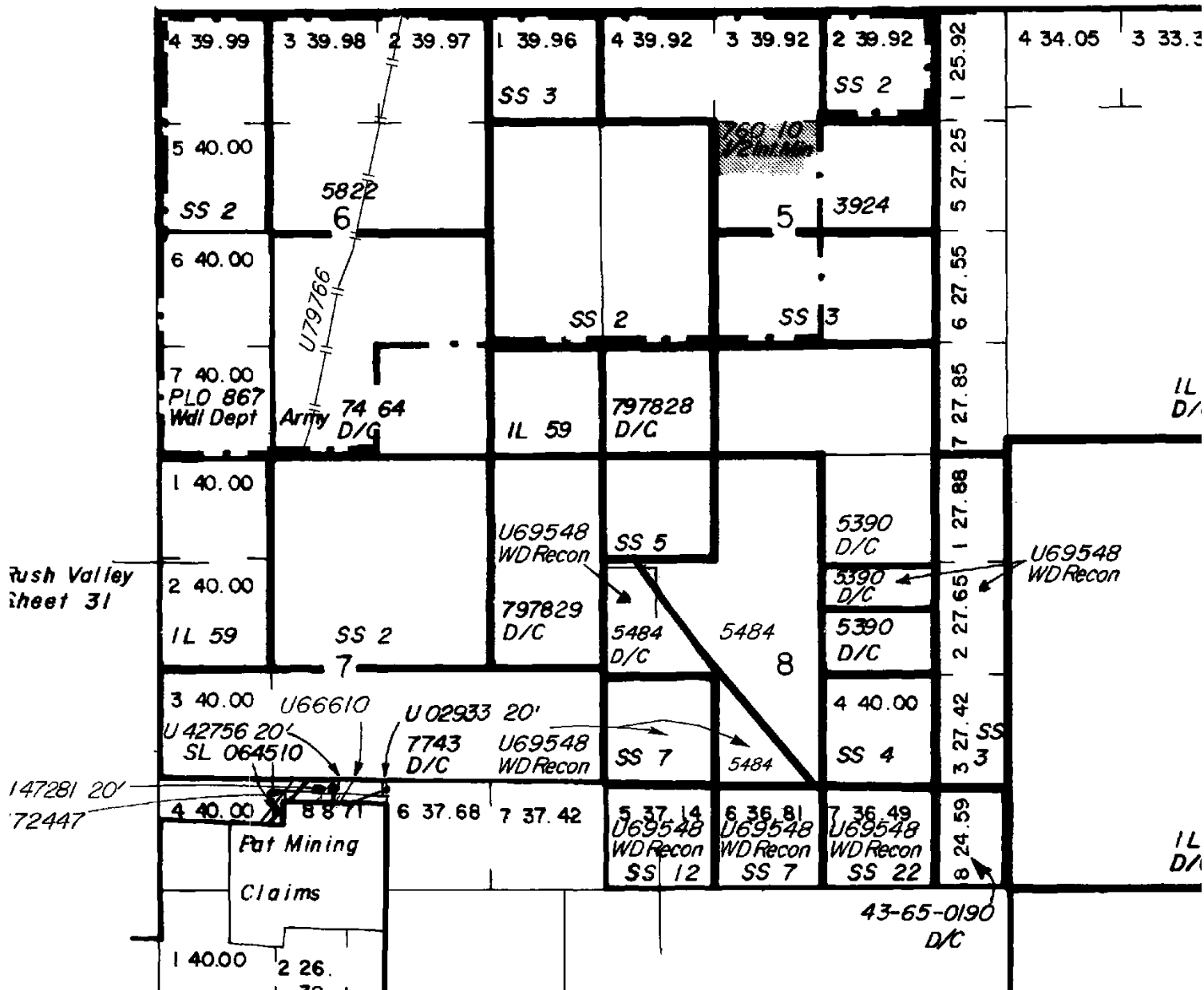


1 ac = 208.71 ft square
 1 cc = 43.560 square feet
 1 Chain = 66 ft.

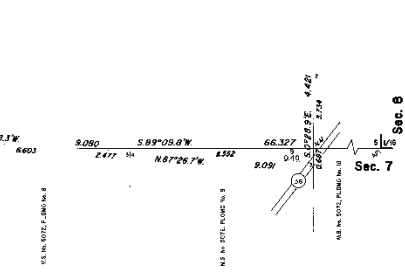
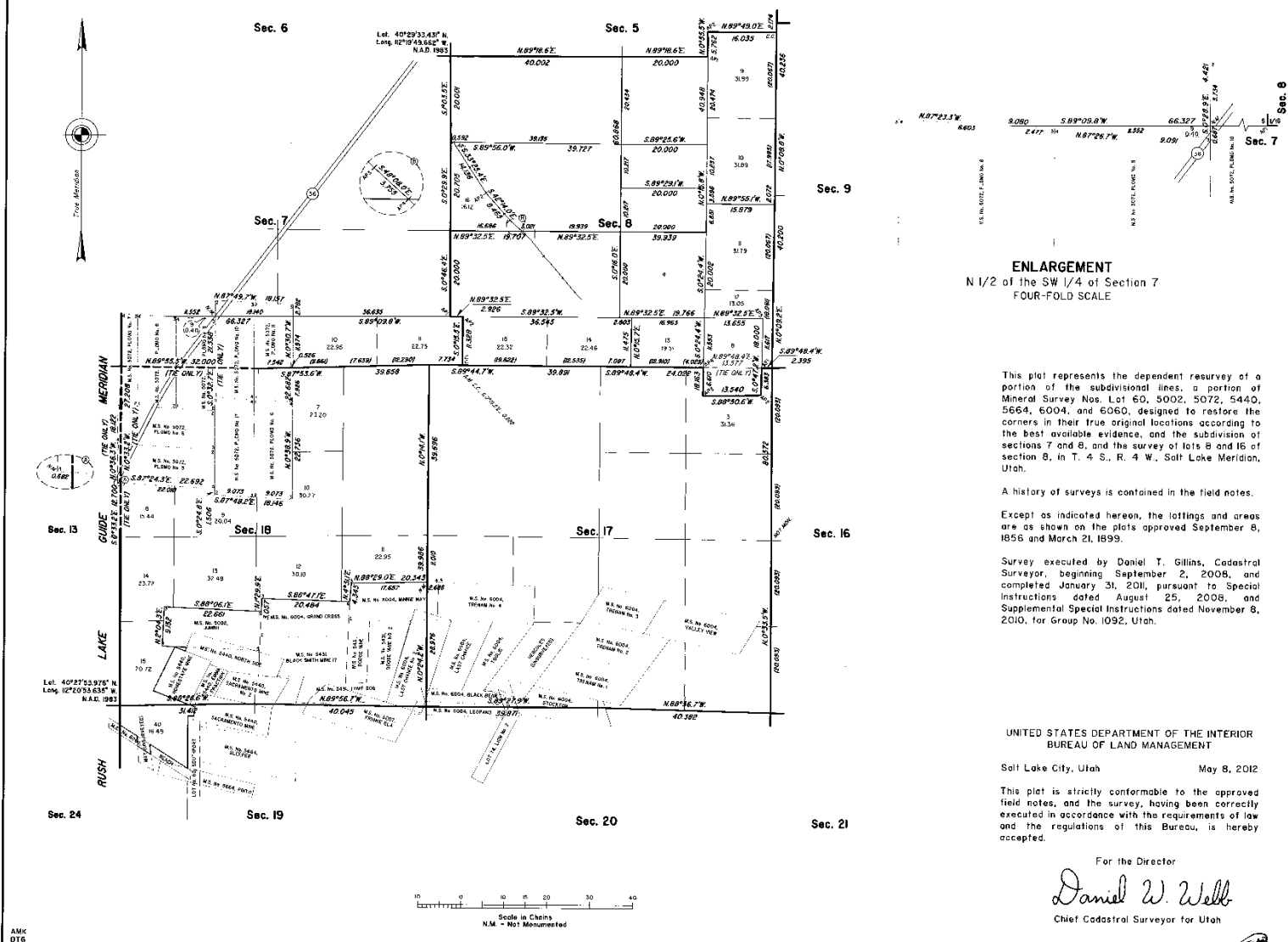
MAP OF
 PROPERTIES IN SECS. 4, 5, 6, 7 & 8
 T.4 S. R.4 W. S.1 B. & M.

Scale: 1" = 400'





TOWNSHIP 4 SOUTH, RANGE 4 WEST, OF THE SALT LAKE MERIDIAN, UTAH. DEPENDENT RESURVEY AND SUBDIVISION OF SECTIONS



ENLARGEMENT
N 1/2 of the SW 1/4 of Section 7
FOUR-FOLD SCALE

This plat represents the dependent resurvey of a portion of the subdivision lines, a portion of Mineral Survey Nos. Lot 60, 5002, 5072, 5440, 5664, 6004, and 6060, designed to restore the corners in their true original locations according to the best available evidence, and the subdivision of sections 7 and 8, and the survey of lots 8 and 16 of section 8, in T. 4 S., R. 4 W., Salt Lake Meridian, Utah.

A history of surveys is contained in the field notes.

Except as indicated hereon, the lottings and areas are as shown on the plats approved September 8, 1856 and March 21, 1899.

Survey executed by Daniel T. Gillis, Cadastral Surveyor, beginning September 2, 2008, and completed January 31, 2011, pursuant to Special Instructions dated August 25, 2008, and Supplemental Special Instructions dated November 8, 2010, for Group No. 1092, Utah.

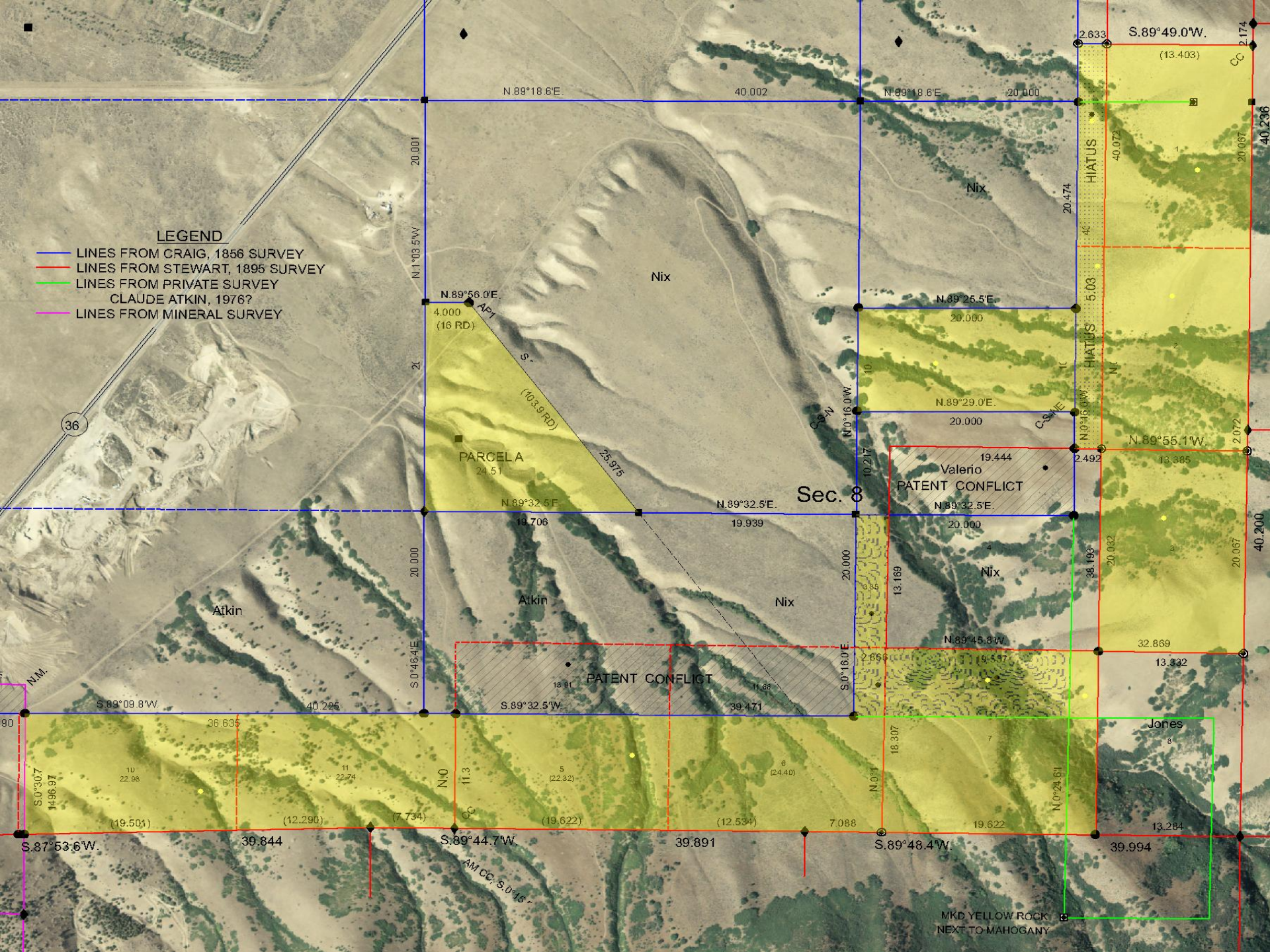
UNITED STATES DEPARTMENT OF THE INTERIOR
BUREAU OF LAND MANAGEMENT
Salt Lake City, Utah May 8, 2012

This plat is strictly conformable to the approved field notes, and the survey, having been correctly executed in accordance with the requirements of law and the regulations of this Bureau, is hereby accepted.

For the Director
Daniel W. Webb
Chief Cadastral Surveyor for Utah

LEGEND

- LINES FROM CRAIG, 1856 SURVEY
- LINES FROM STEWART, 1895 SURVEY
- LINES FROM PRIVATE SURVEY
CLAUDE ATKIN, 1976?
- LINES FROM MINERAL SURVEY



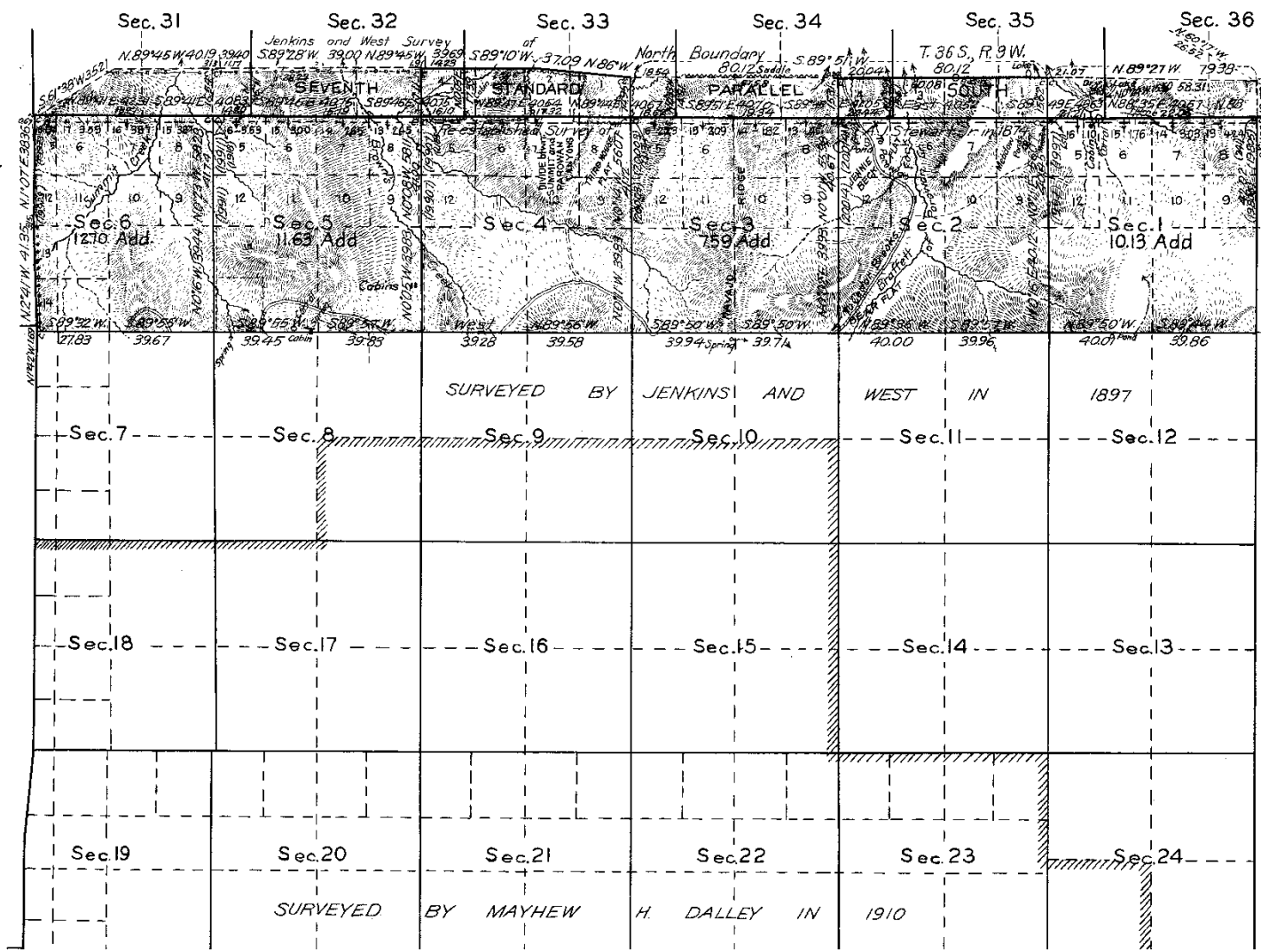


CASE STUDY ISSUES

- Junior – Senior Surveys
 - Overlap
 - Hiatus
- Bona Fide Rights - 6-50→69: 2009 Manual
- Public Domain vs. Acquired Lands-6-43 & 44: 2009 Manual
- Local Control
- Local Surveyor vs. Federal Authority - 6-69: 2009 Manual

RESURVEY

Nº 36 SOUTH RANGE Nº 9 WEST OF THE SALT LAKE BASE & MERIDIAN, UTAH



Lat 37° 43' N.
Long. 112° 46' W.
Sec. 6 T. 36 S. R. 9 W.

SURVEYED BY JENKINS AND WEST IN 1897

SURVEYED BY MAYHEW H. DALLEY IN 1910

This plat of the resurvey of Secs 1 to 6 inclusive, T. 36 S., R. 9 W. surveyed by Jenkins and West U.S. Deputy Surveyors in 1897, and the Seventh Standard Parallel South through Range 9 West surveyed by A. J. Stewart Jr. U.S. Deputy Surveyor in 1874, delineates a retracement and re-establishment of the lines of the original surveys as shown upon the plats approved April 2, 1900 and March 12, 1875 respectively, in their true original position according to the best available evidence of the position of the original corners; all differences between the measurements shown on the original plats and those derived in the retracement have been distributed proportionally between the accepted corners in accordance with surveying rules. Reference will be made to the plat approved April 2, 1900 for the showing of the areas and legal designations of the various subdivisions, except those public land subdivisions immediately south of the Stewart Standard Parallel in Secs 1, 3, 5 and 6 which have been related in accordance with the Commissioner's letter 1256234 E. W. H. R. dated Sept 1, 1927

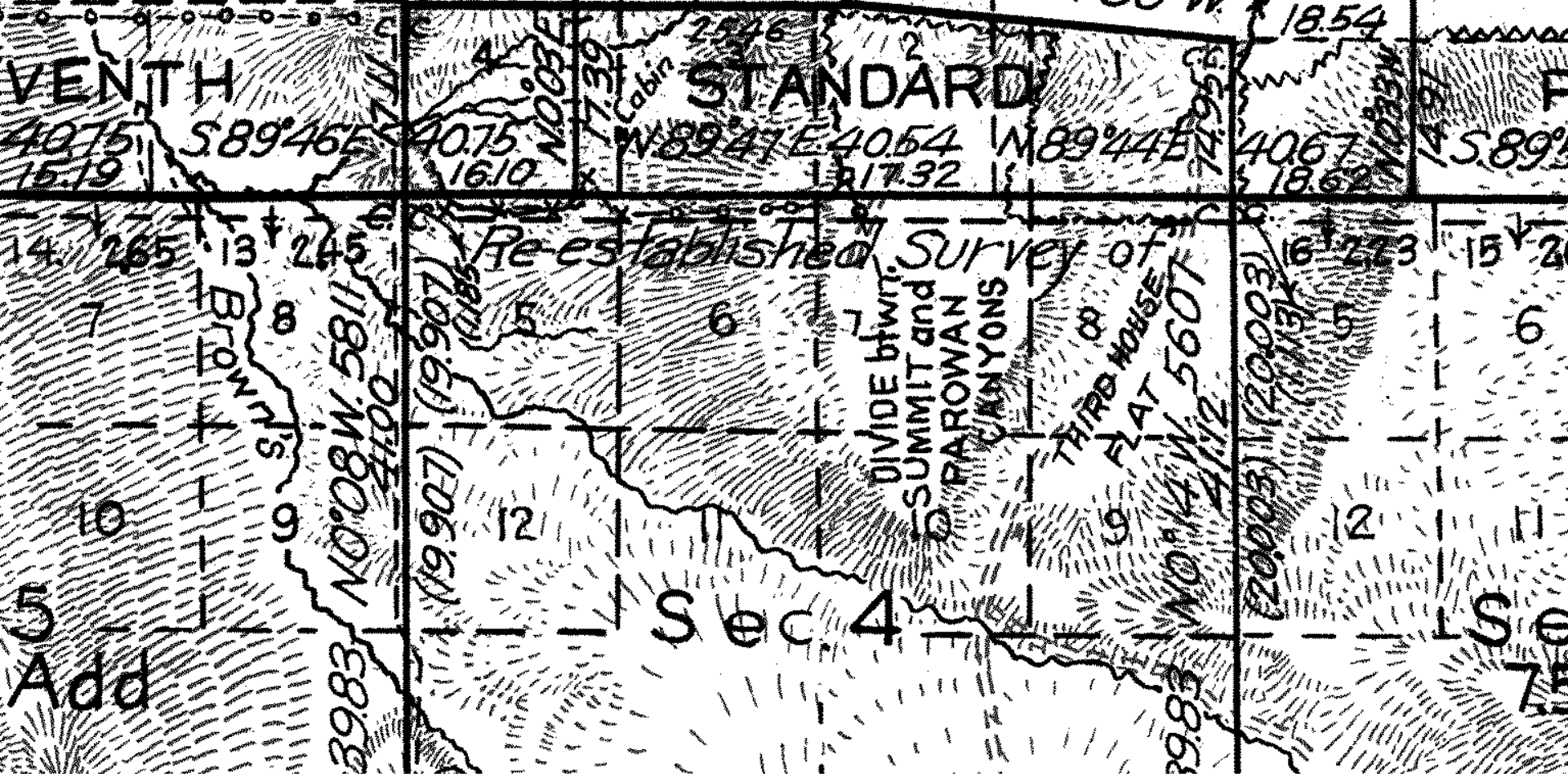
Sec. 32

Sec. 33

and West Survey
39.00 N.89°45'W 39.69
1.91 14.23

of
S.89°10'W 37.09 N.86°W 18.54

North BOL



VENTH

STANDARD

F

14 265

13 245

12 225

11 205

10 185

9 165

8 145

7 125

5 10

4 0

3 0

2 0

1 0

0 0

0 0

0 0

Add

Sec. 4

Sec. 4

BROWN'S
39.83 N.80°0'W 38.62
1.00 11.00

(19.907) (19.907)
17.39

12 106.61

11 106.61

10 106.61

9 106.61

8 106.61

40.75 S.89°46'E 15.19

40.75 N.0°03'E 16.10

40.54 N.89°47'E 17.32

40.67 N.89°44'E 18.62

40.67 N.89°44'E 18.62

40.67 S.89°44'E 18.62

40.67 S.89°44'E 18.62

14 265

13 245

12 225

11 205

10 185

9 165

8 145

5 10

4 0

3 0

2 0

1 0

0 0

0 0

39.83 N.80°0'W 38.62

(19.907) (19.907)

12 106.61

11 106.61

10 106.61

9 106.61

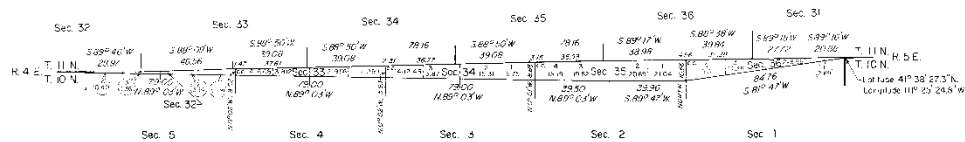
8 106.61

TOWNSHIP 10 1/2 NORTH, RANGE 4 EAST, OF THE SALT LAKE MERIDIAN, UTAH.
DEPENDENT RESURVEY AND SURVEY

A history of surveys is contained in the field notes.

This plan represents the dependent resurvey of a portion of the south boundary of T. 11 N., R. 5 E., and a portion of the south boundary of T. 11 N., R. 4 E., designed to restore the corners to their true original locations according to the best available evidence, and the survey of the subdivision lines of T. 10 1/2 N., R. 4 E., Salt Lake Meridian, Utah.

Surveys executed by Glen B. Hatch, Frank C. Proffers, Jr., and Gary L. Krates, Supervisory Cadastral Surveyors, beginning August 28, 1978 and completed October 8, 1981, pursuant to Special Instructions dated June 5, 1978, for Grand No. 580, Utah.



True Meridian
M.D.S.
NAD 83
UTM, NAD 83
10° N 1'

UNITED STATES DEPARTMENT OF THE INTERIOR
BUREAU OF LAND MANAGEMENT
Salt Lake City, Utah March 19, 1983

This plan is strictly conformable to the approved field notes, and the survey having been correctly executed in accordance with the requirements of law and the regulations of this Bureau, is hereby accepted.

For the Director

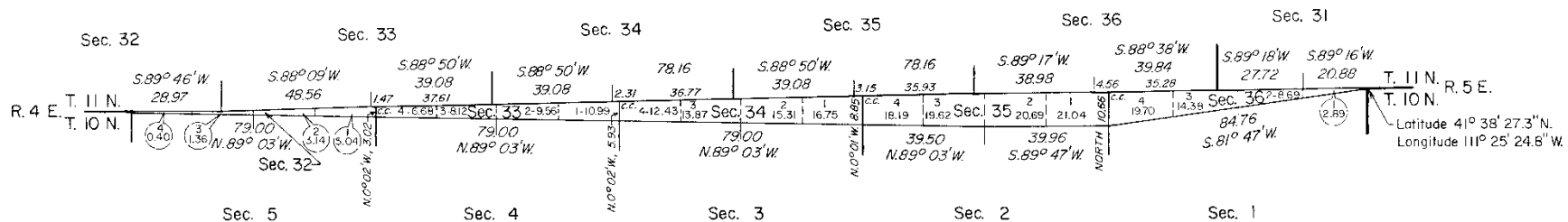
Glen B. Hatch

Chief Cadastral Surveyor for Utah

0 100 200 300 400 500
Feet
Scale in Chains

Section 32 ----- 399 Acres
Section 33 ----- 353.55 Acres
Section 34 ----- 363.00 Acres
Section 35 ----- 73.94 Acres
Section 36 ----- 456.66 Acres
Total Public Land ----- 2288.5 Acres

Survey
 Profai
 Cadast
 and co
 Specia
 Group M



Steven L. Hope
PLSS/GCDB Team Lead
Cadastral Survey, Utah State Office, BLM
PO BOX 45155
Salt Lake City, UT 84148-0155
(801)-539-4160(Work)
shope@blm.gov