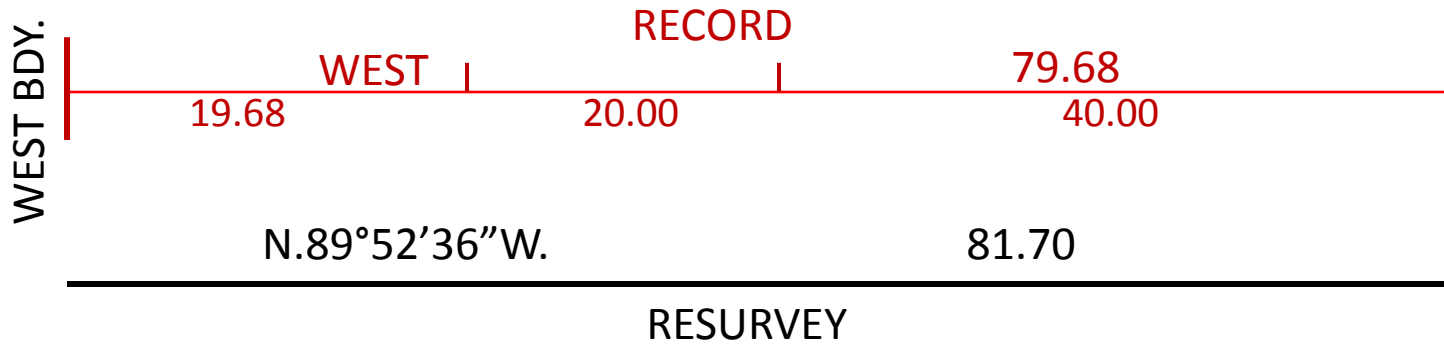


SUBDIVISION OF SECTIONS

- THE SURVEYOR IS OFTEN CALLED UPON TO SUBDIVIDE A SECTION, EXCEPT IN THE CASE OF A REGULAR SECTION, THE RULES OF SECTION SUBDIVISION CAN BE MISUNDERSTOOD AND CAUSE SOME PROBLEMS. I WILL PROVIDE SOME BASIC CONSIDERATIONS WITH IRREGULAR SECTIONS. WE WILL DEAL WITH THE USE OF LOTS AND THEIR AREAS AS A MEANS FOR DETERMINING THE PROPER LOCATION OF CONTROL CORNERS NEEDED TO CORRECTLY SUBDIVIDE UNUSUAL SECTIONS.

- Before subdividing; establish or reestablish the controlling corners on the section lines.
- Methods for establishing corner positions
 - 1-single proportion
 - 2-double proportion
 - 3-one point control
 - 4-two point control
 - 5-three point control

SINGLE PROPORTION



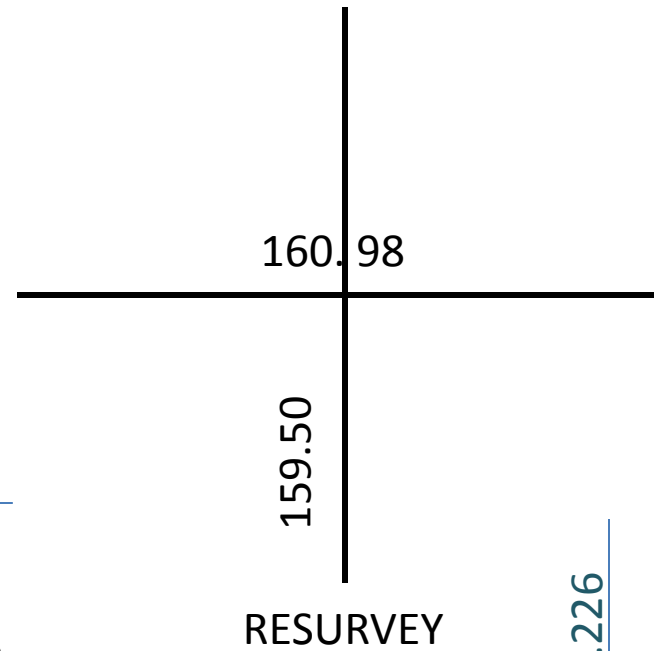
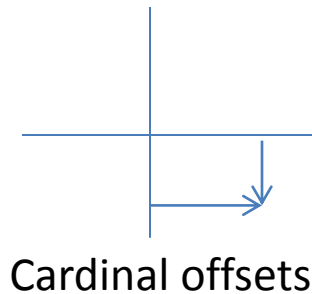
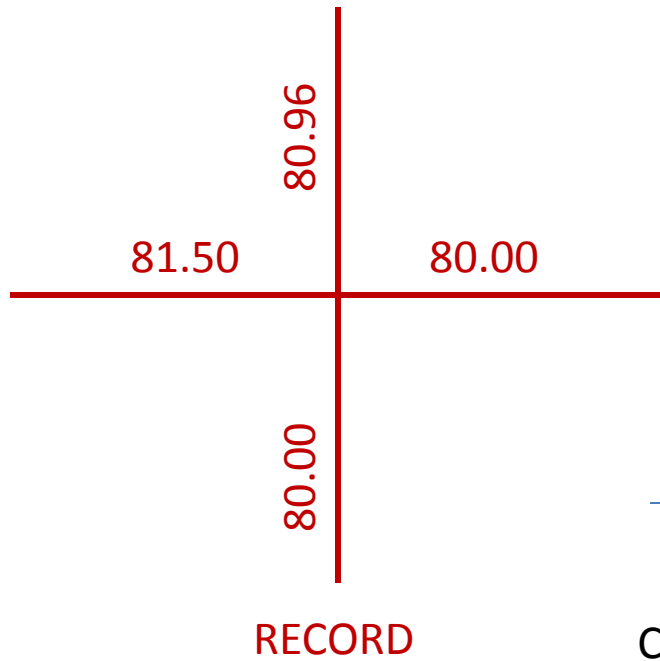
COMPUTE POSITIONS FOR THE LOST 1/4, ALSO THE W 1/16,
(WHICH WAS NOT SET IN THE ORIGINAL SURVEY).

$$\frac{\text{RESURVEY}}{\text{RECORD}} = \text{FACTOR} \quad \frac{81.70}{79.68} = 1.02535$$



DOUBLE PROPORTION

TWO SINGLE PROPORTIONS; NORTH-SOUTH & EAST-WEST



EAST-WEST

$$\frac{160.98}{161.50} = 0.9968$$

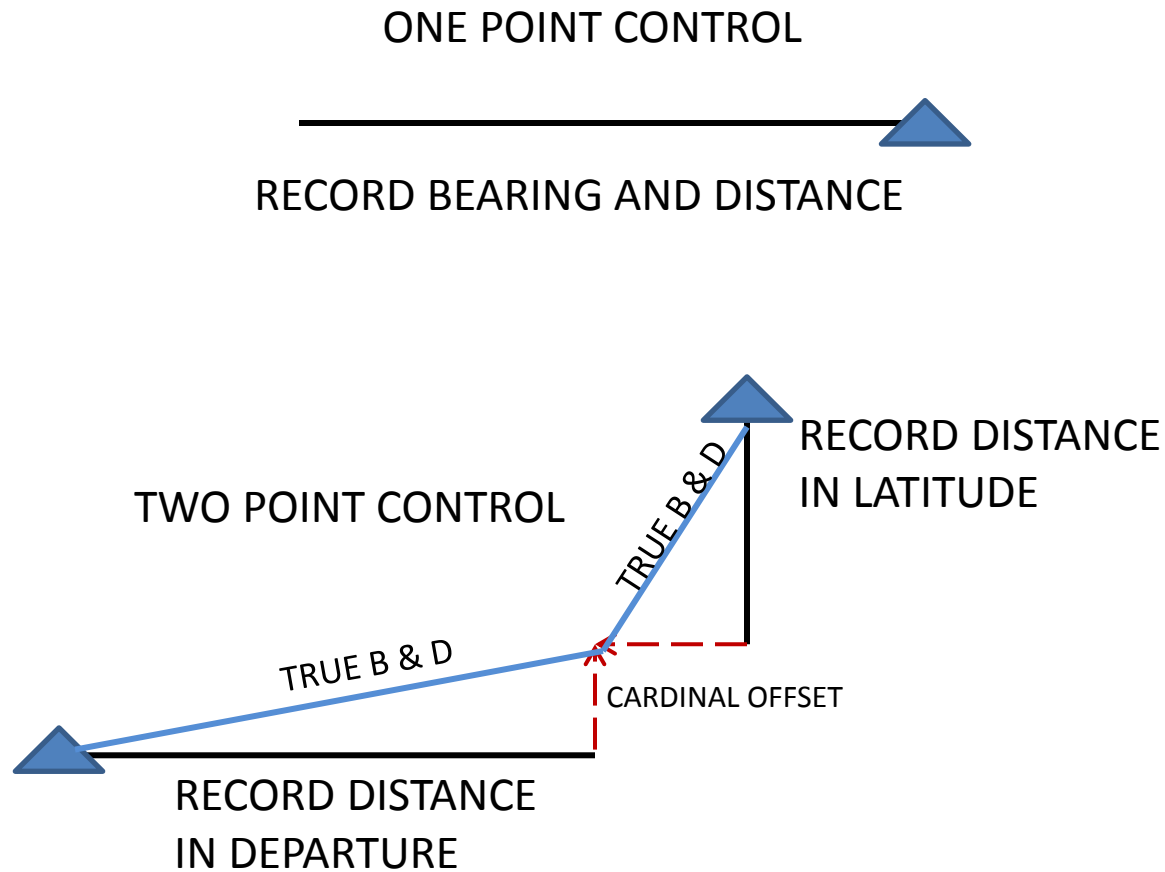
NORTH-SOUTH

$$\frac{159.50}{160.96} = 0.9909$$

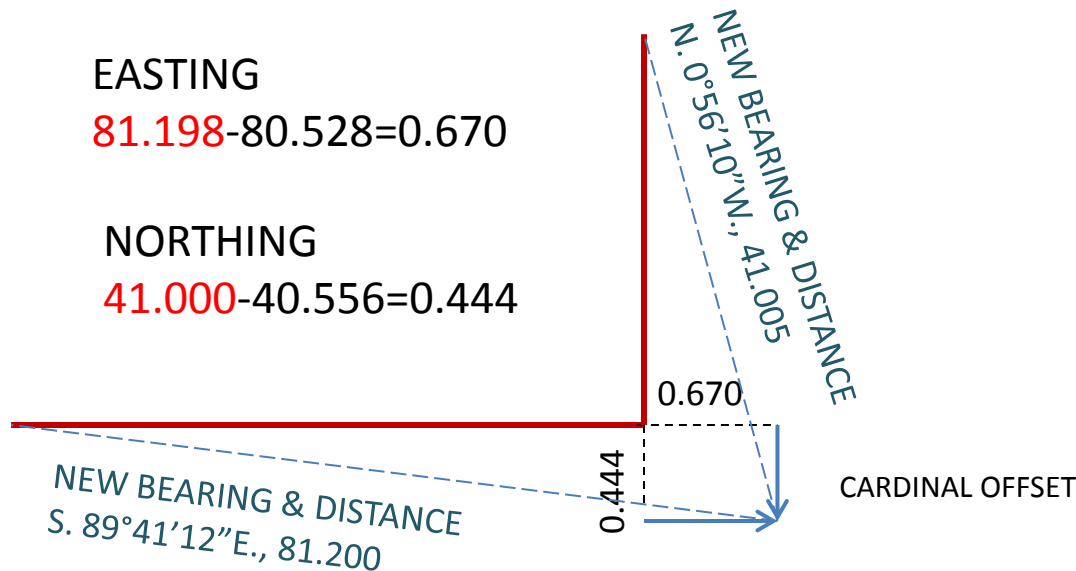
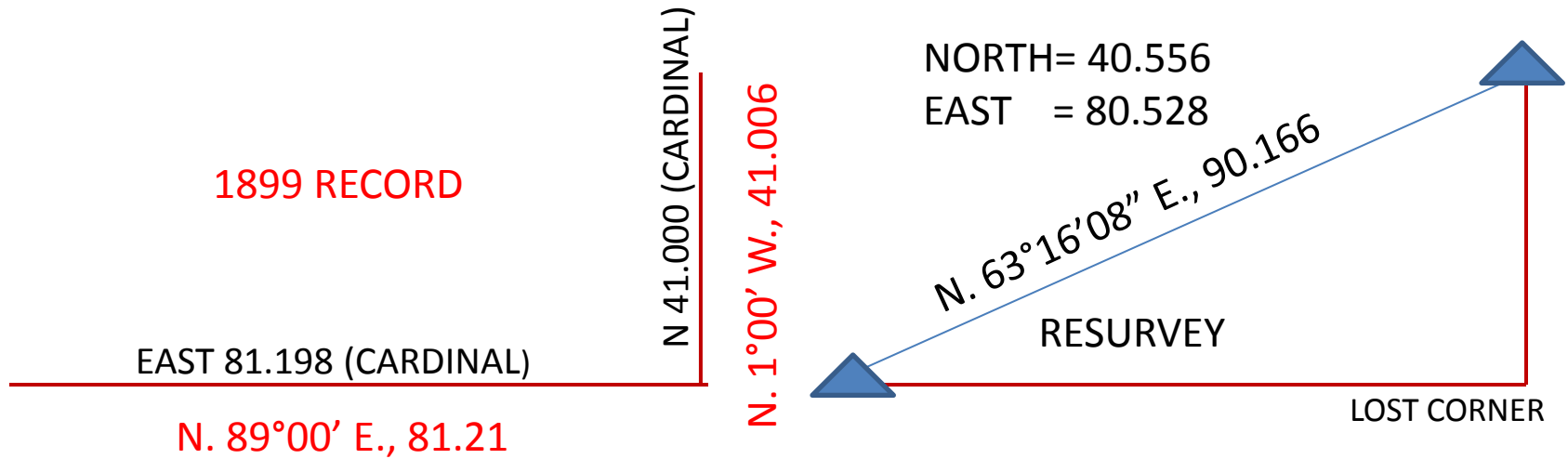


RECORD MEASUREMENTS

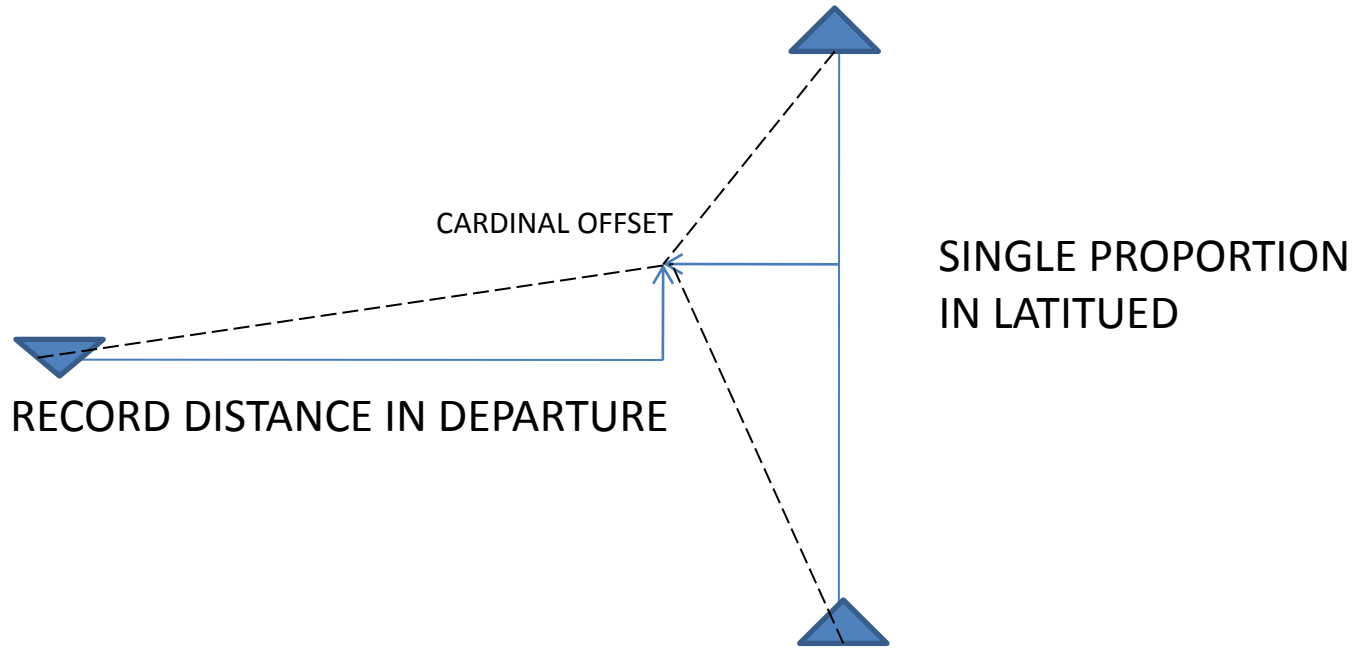
ONE POINT, TWO POINT, AND THREE POINT CONTROL

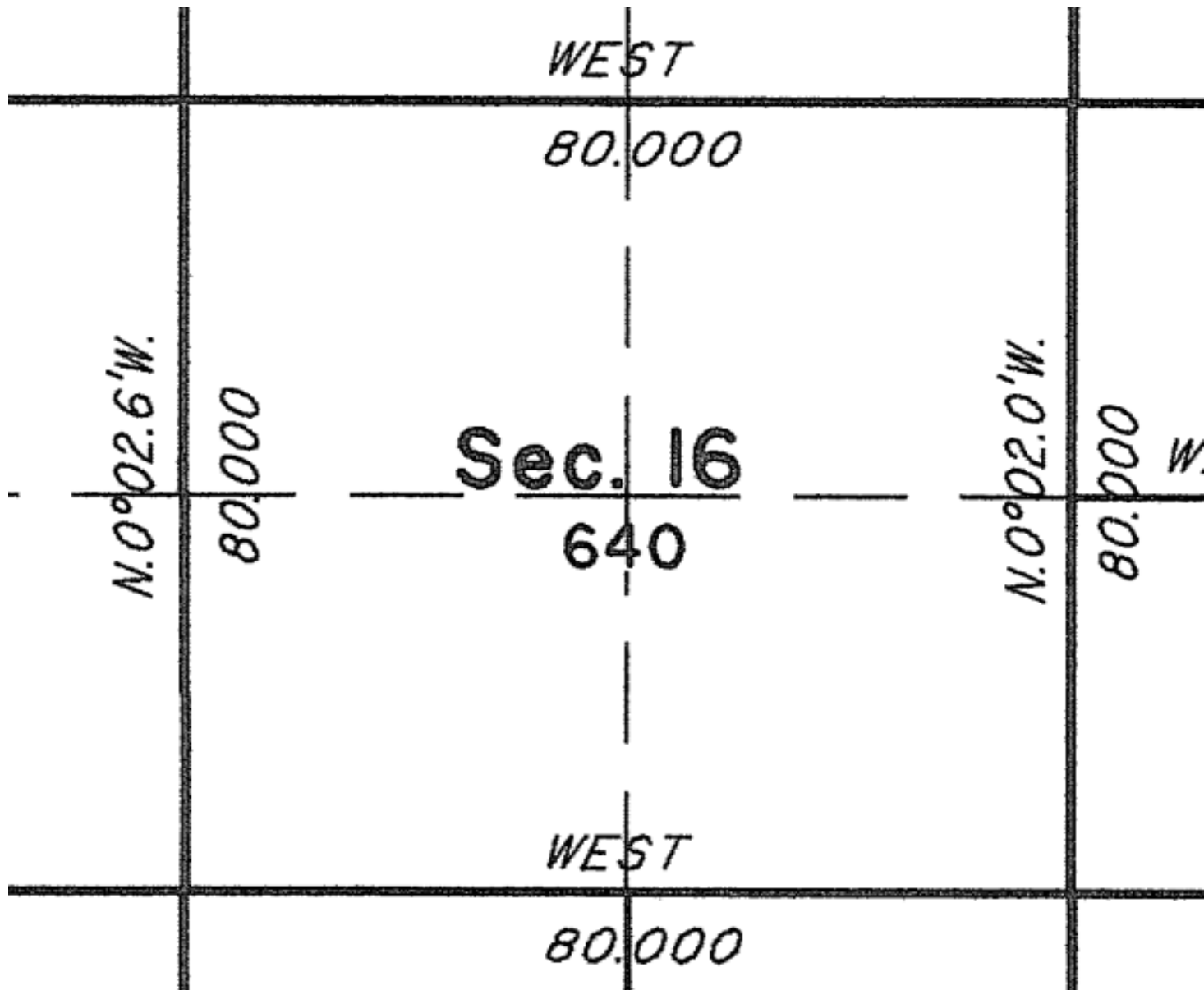


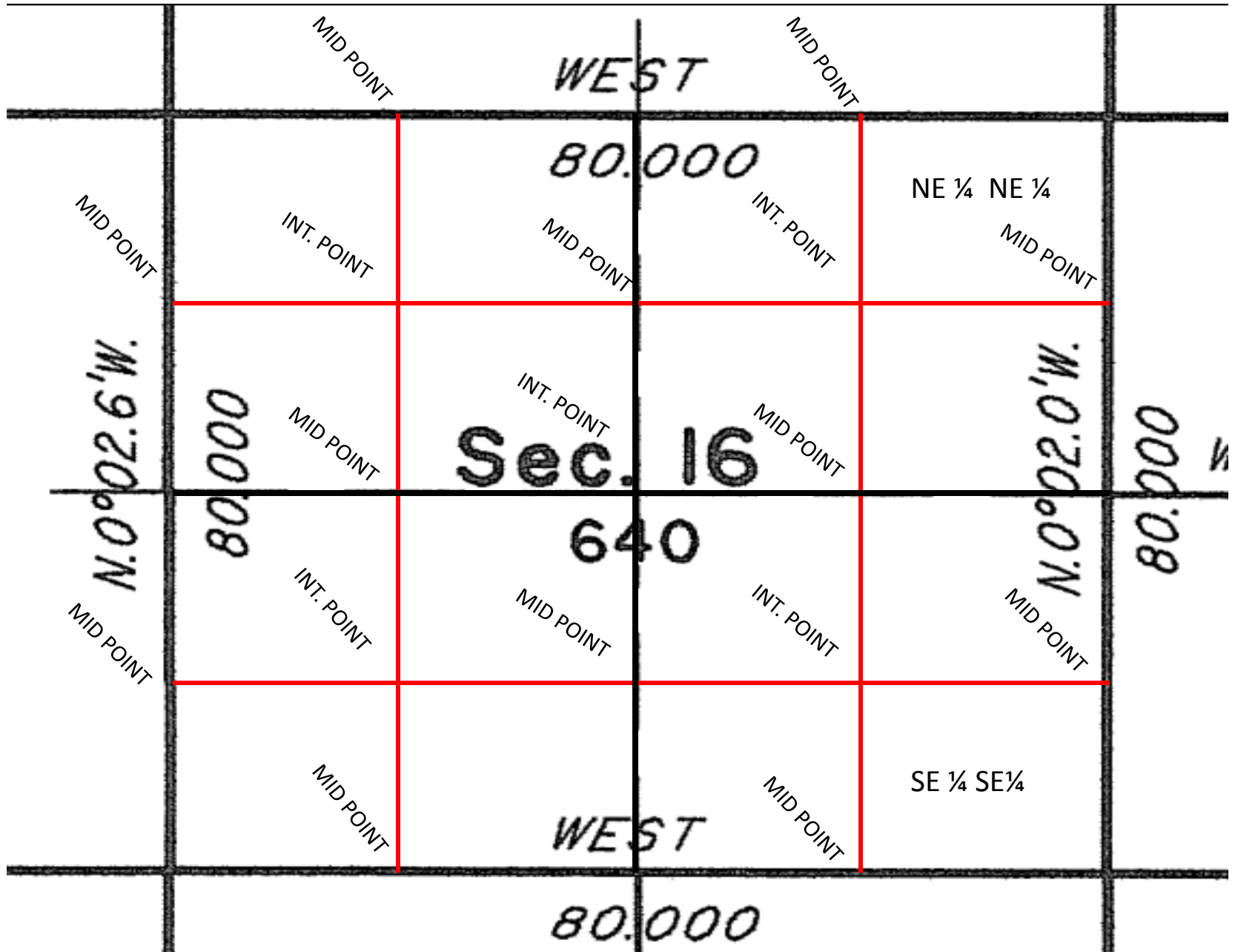
EXAMPALE OF A TWO POINT CONTROL



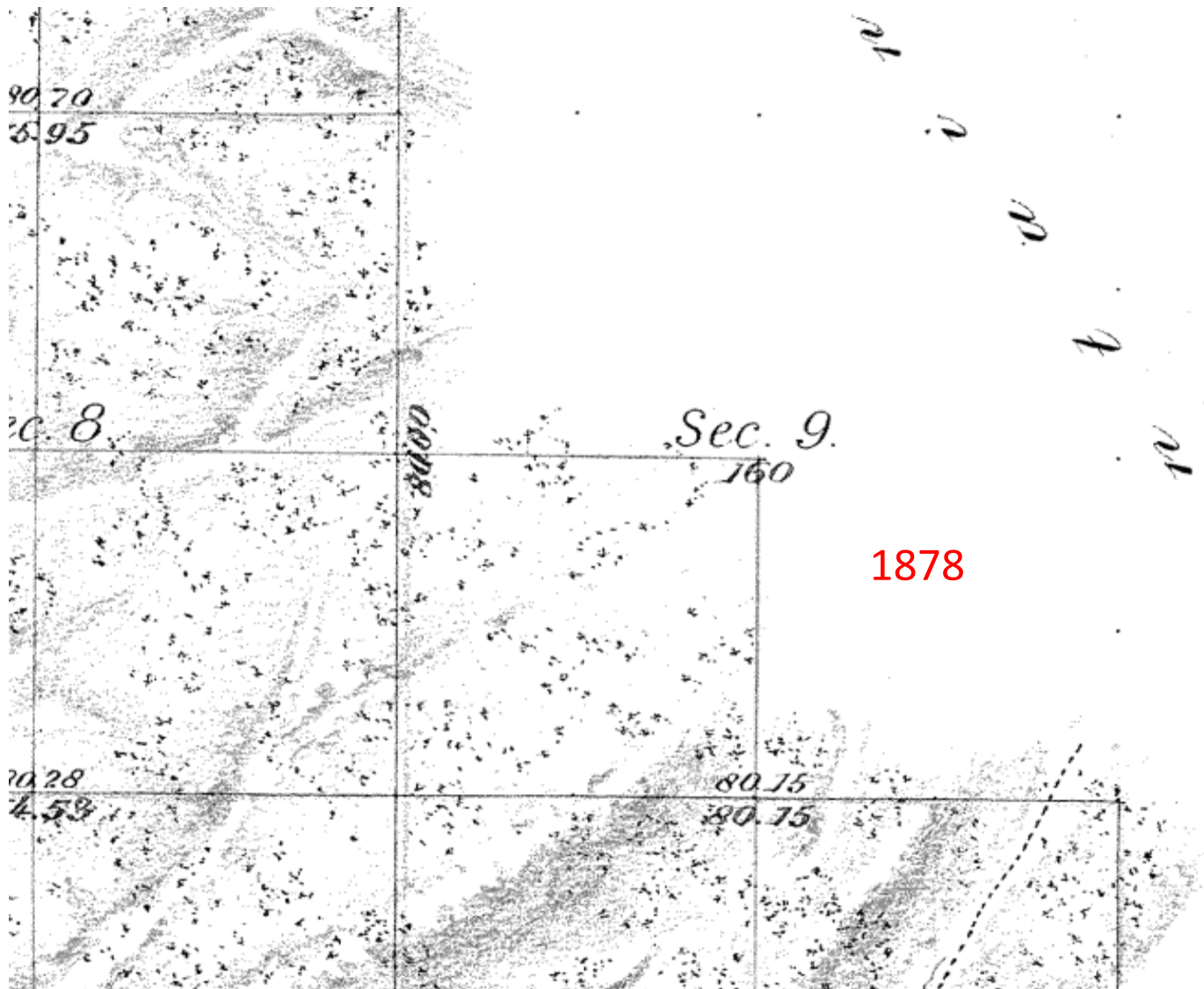
THREE POINT CONTROL



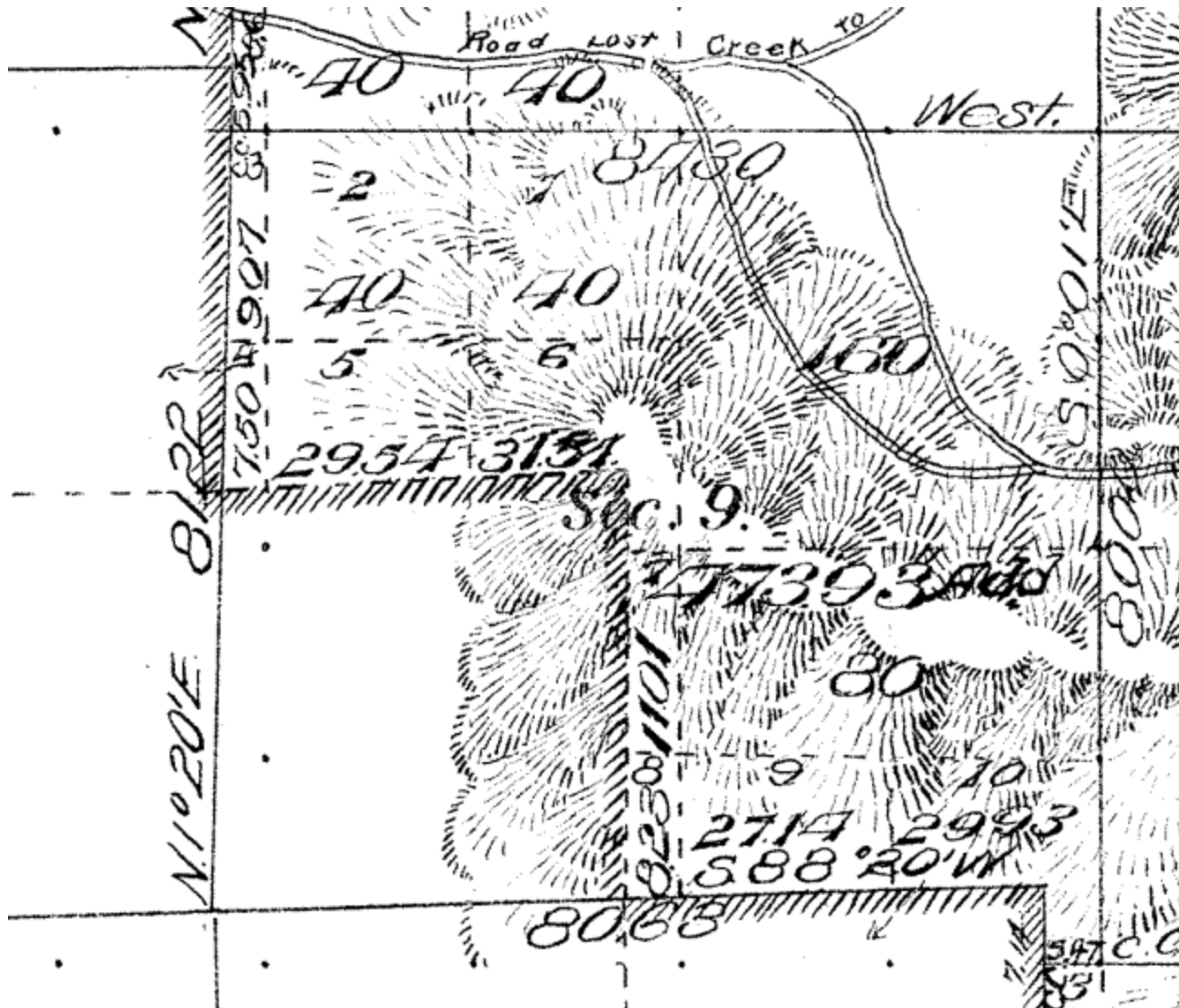


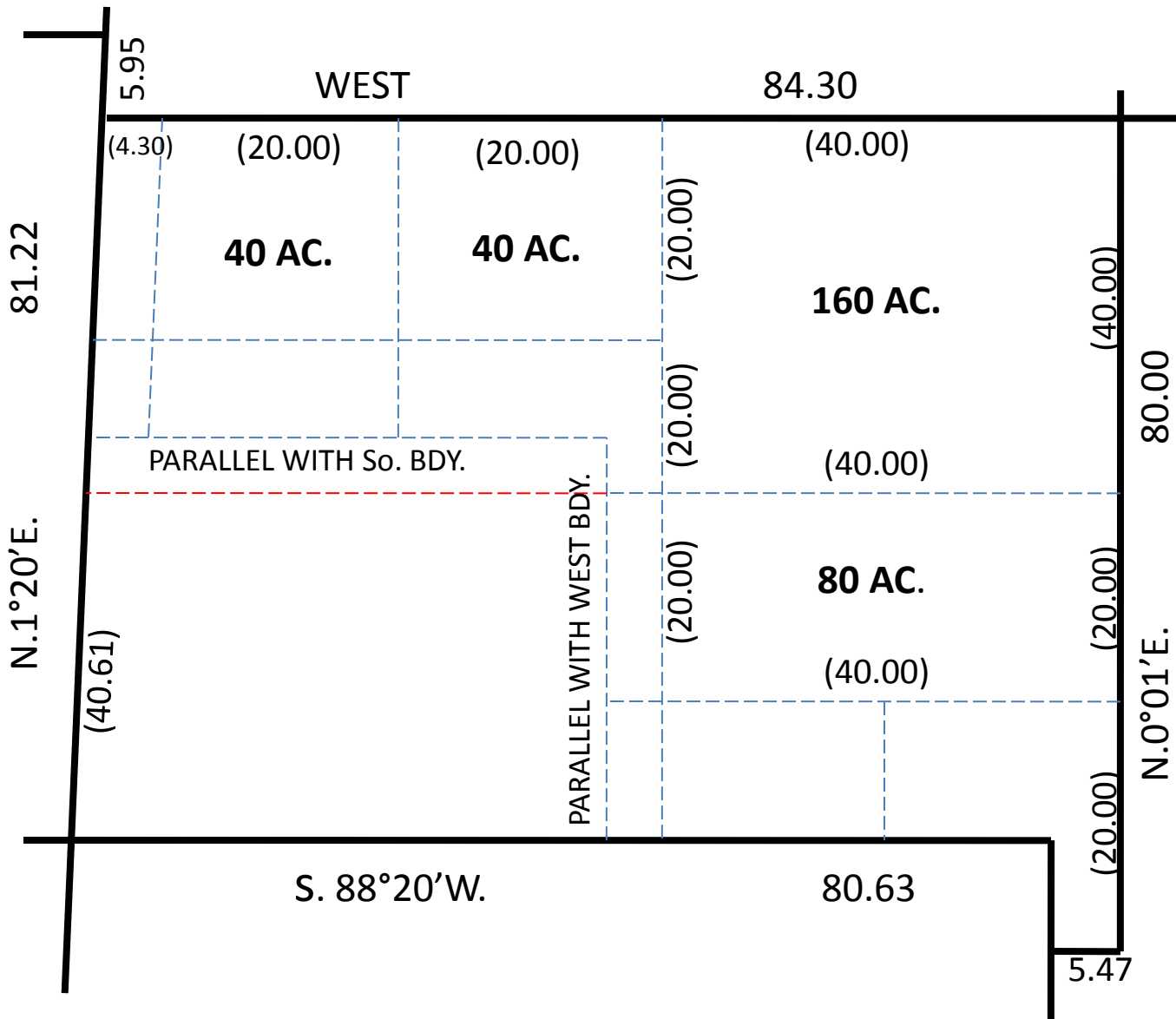


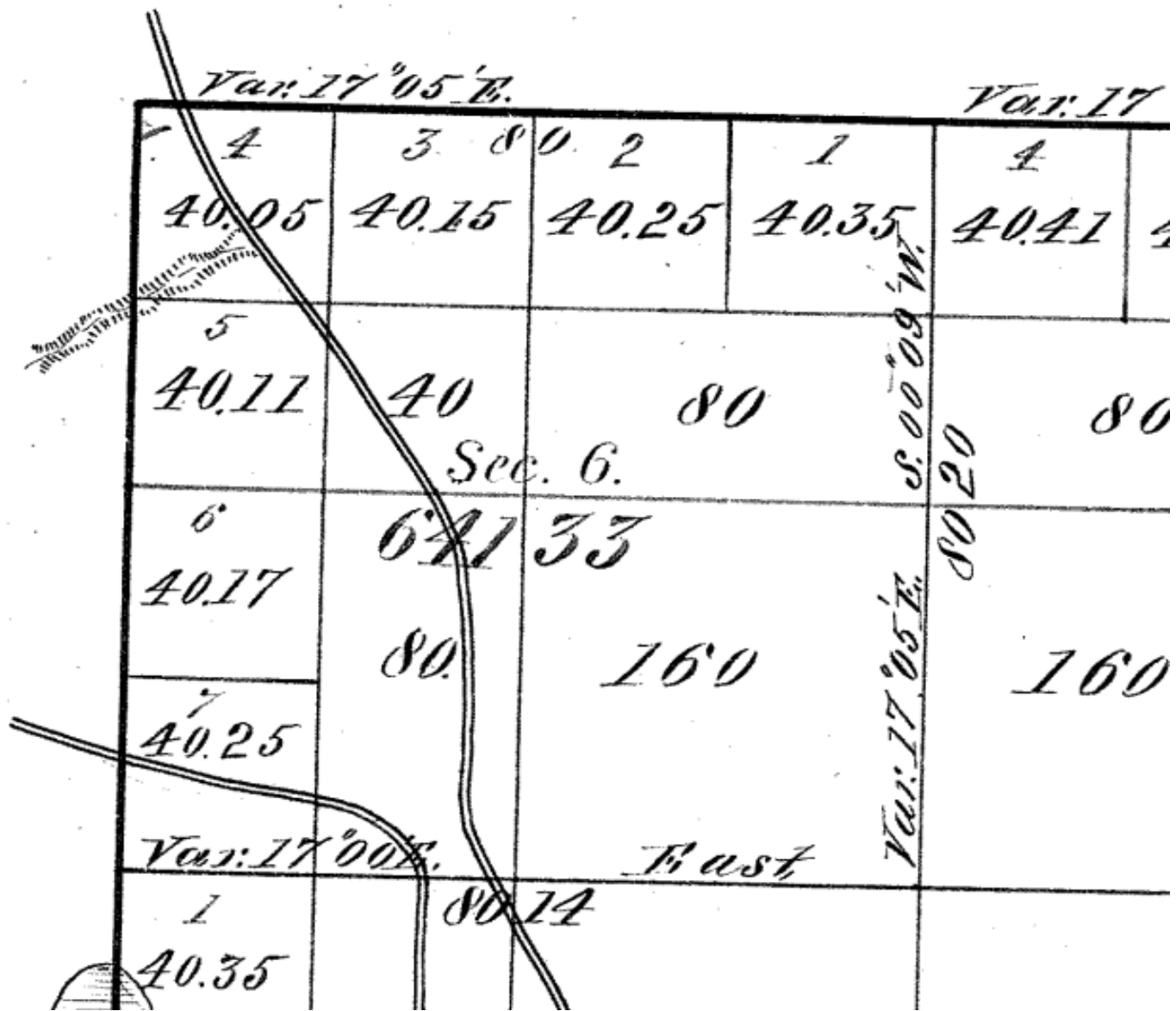
PROTRACTED SW 1/4



COMPLETION SURVEY 1899



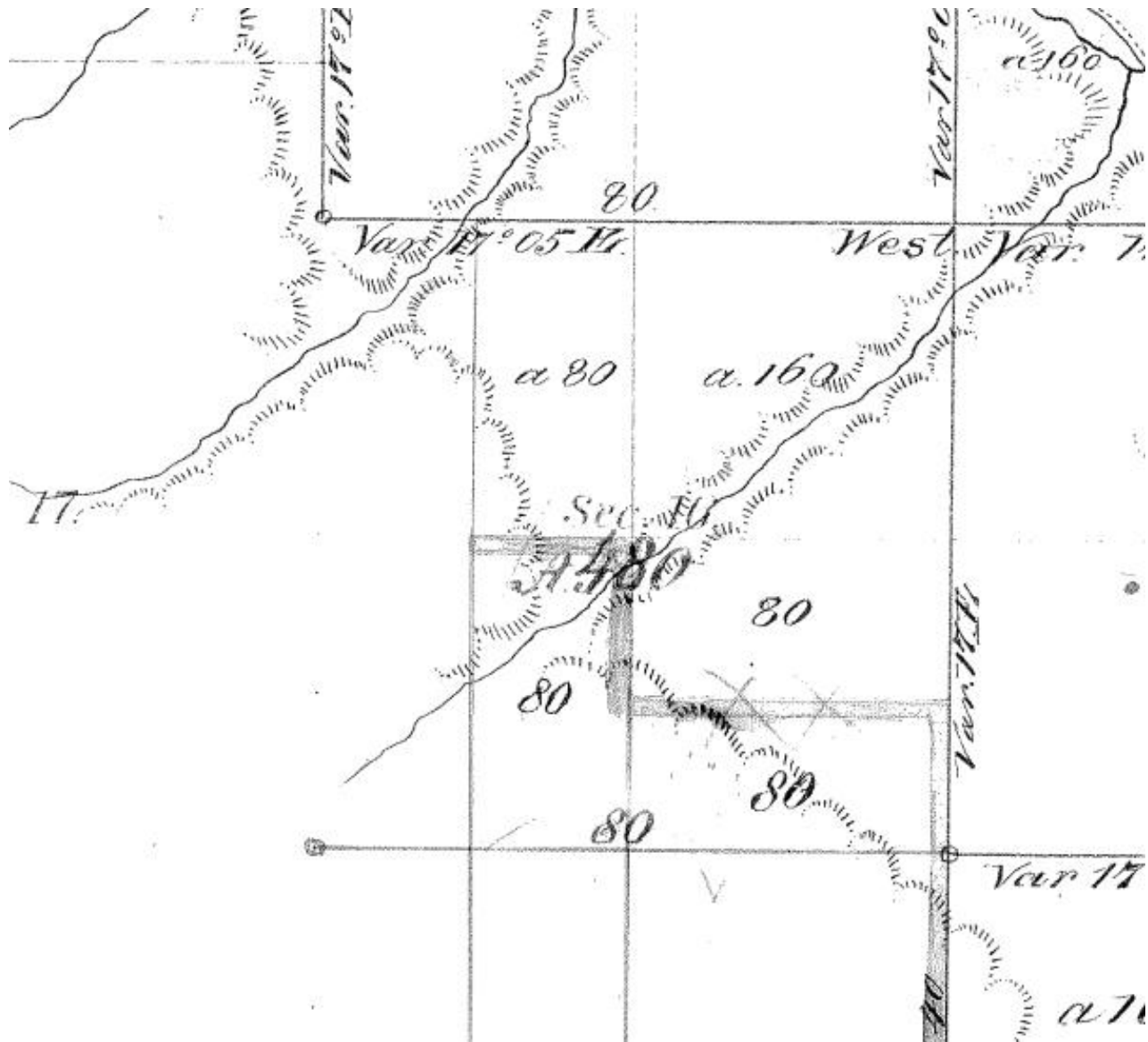


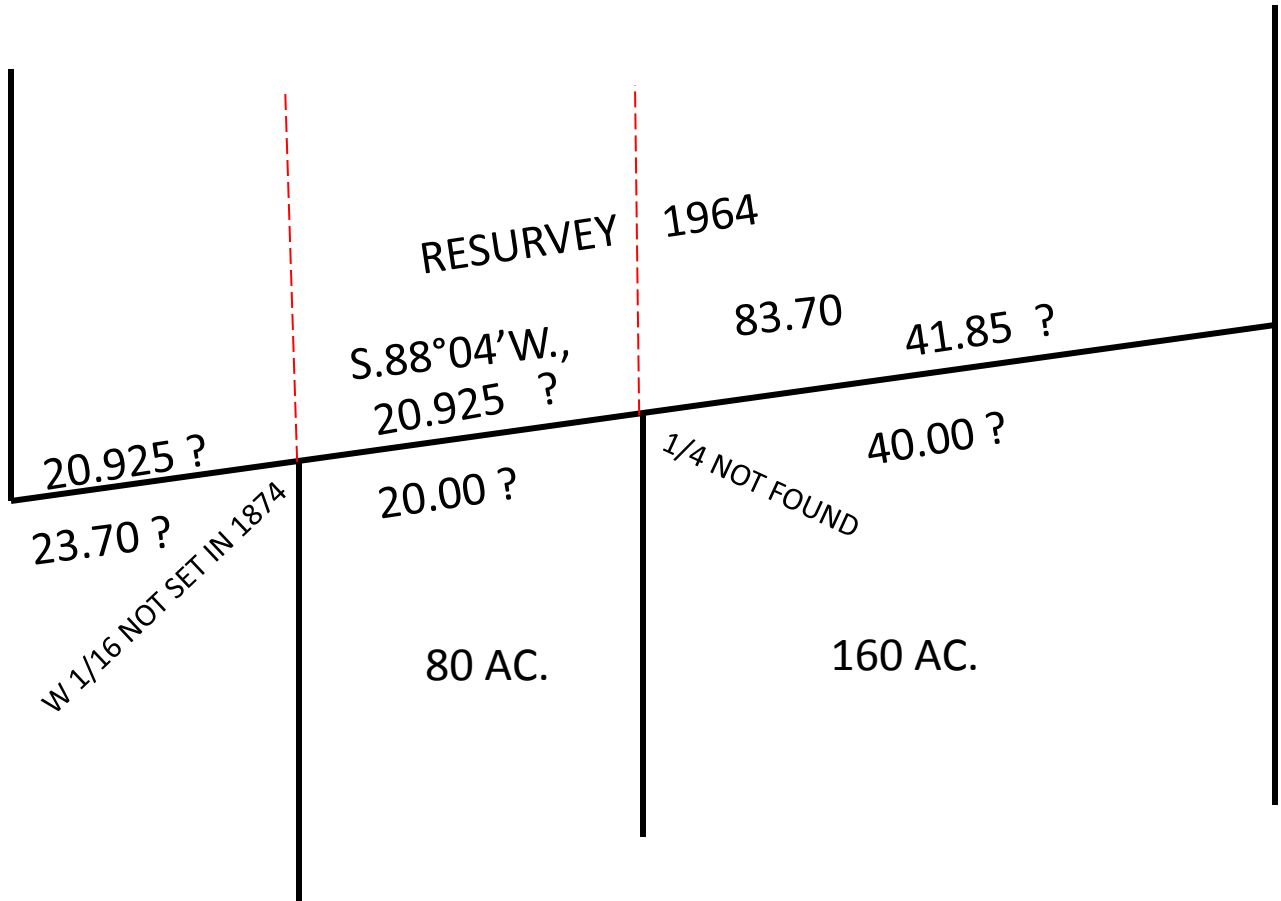


		80.00			
(20.00)	(20.00)	(20.00)	(20.00)	(20.00)	(20.00)
40.05	40.15	40.25	40.35		
(20.05)	(20.10)	(20.15)	(20.20)		
40.11	40	80			
(20.06)	(20.00)				
40.17					
(20.11)					
40.25	80	160			
(20.14)	(40.00)	(40.00)			
	(20.00)	(40.00)			
		80.14			
80.00					80.20

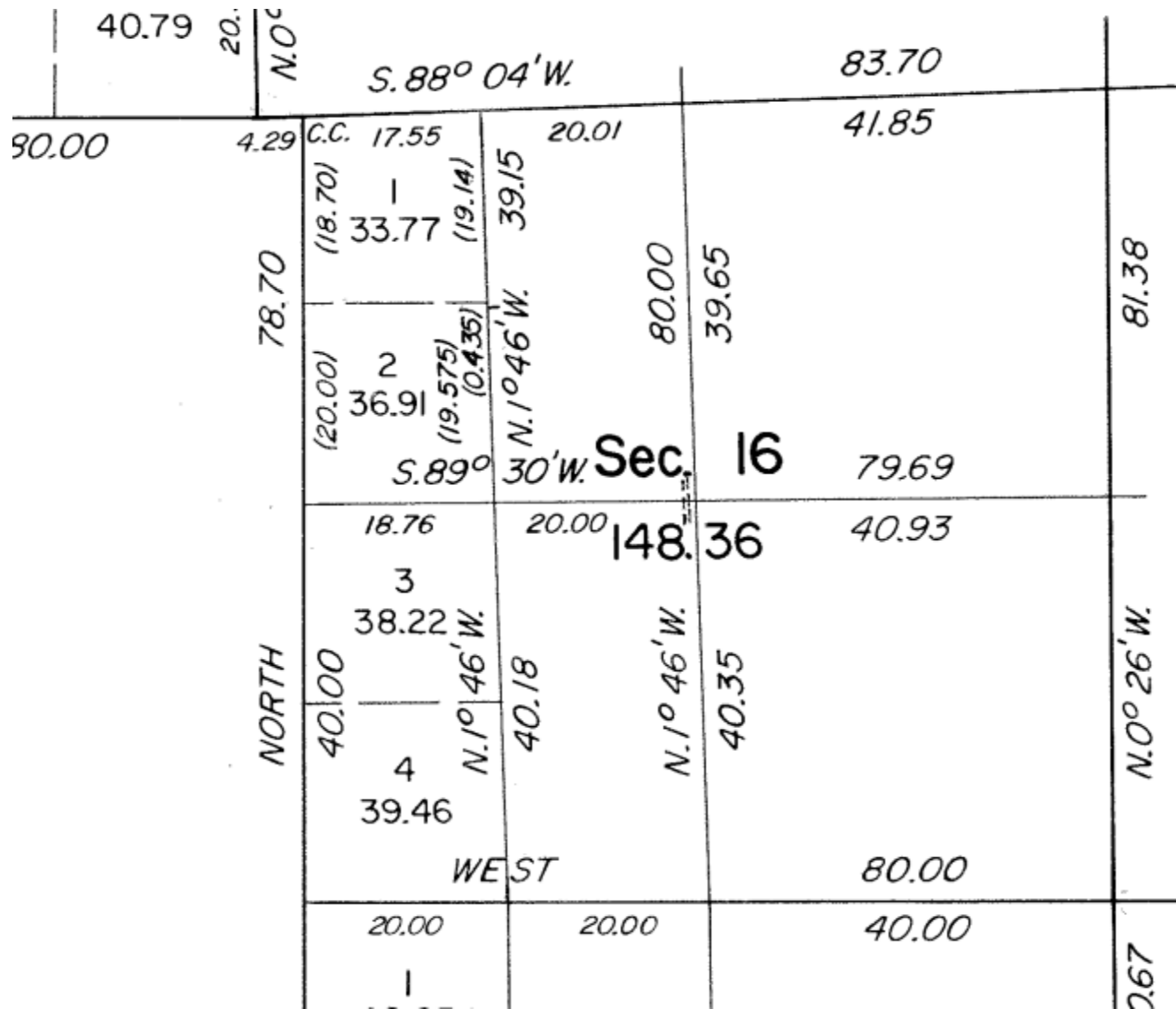
		78.27			
83.64	(18.27)	(20.00)	(20.00)	(20.00)	
	43.40	47.40	47.49	47.58	
	(18.42)				
	36.97	40	80		
	(18.55)	(20.00)			(20.00)
	37.22				
	(18.67)	80	160		
	37.47	(40.00)			(40.00)
	(18.80)	(20.00)			(40.00)
		78.80			
		83.81			

1874 SURVEY

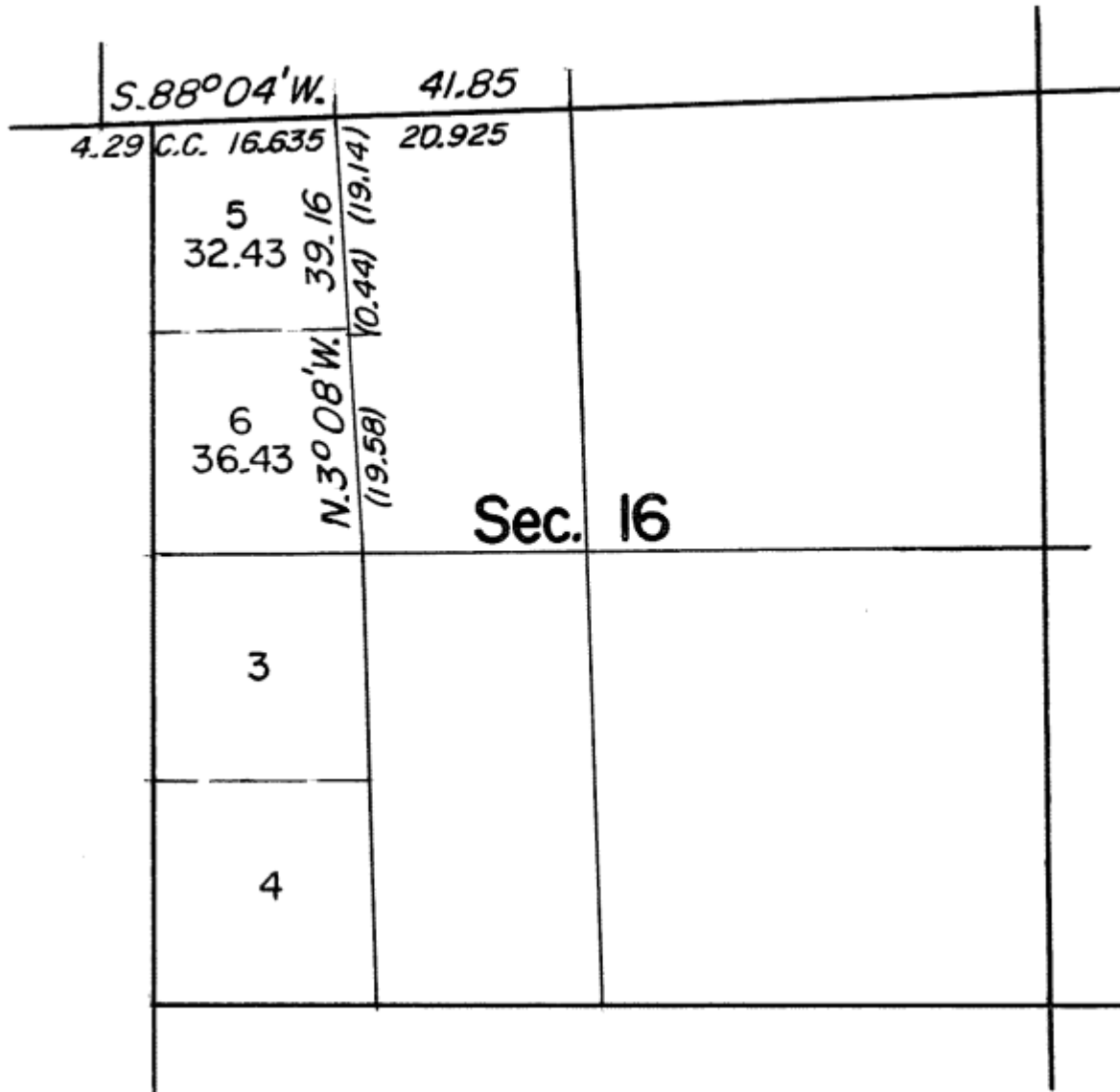




1984 COMPLETION SURVEY



1995 CORRECTIVE RESURVEY



NORTH-SOUTH AND EAST-WEST CENTERLINES;
WEIGHTED MEAN BEARING

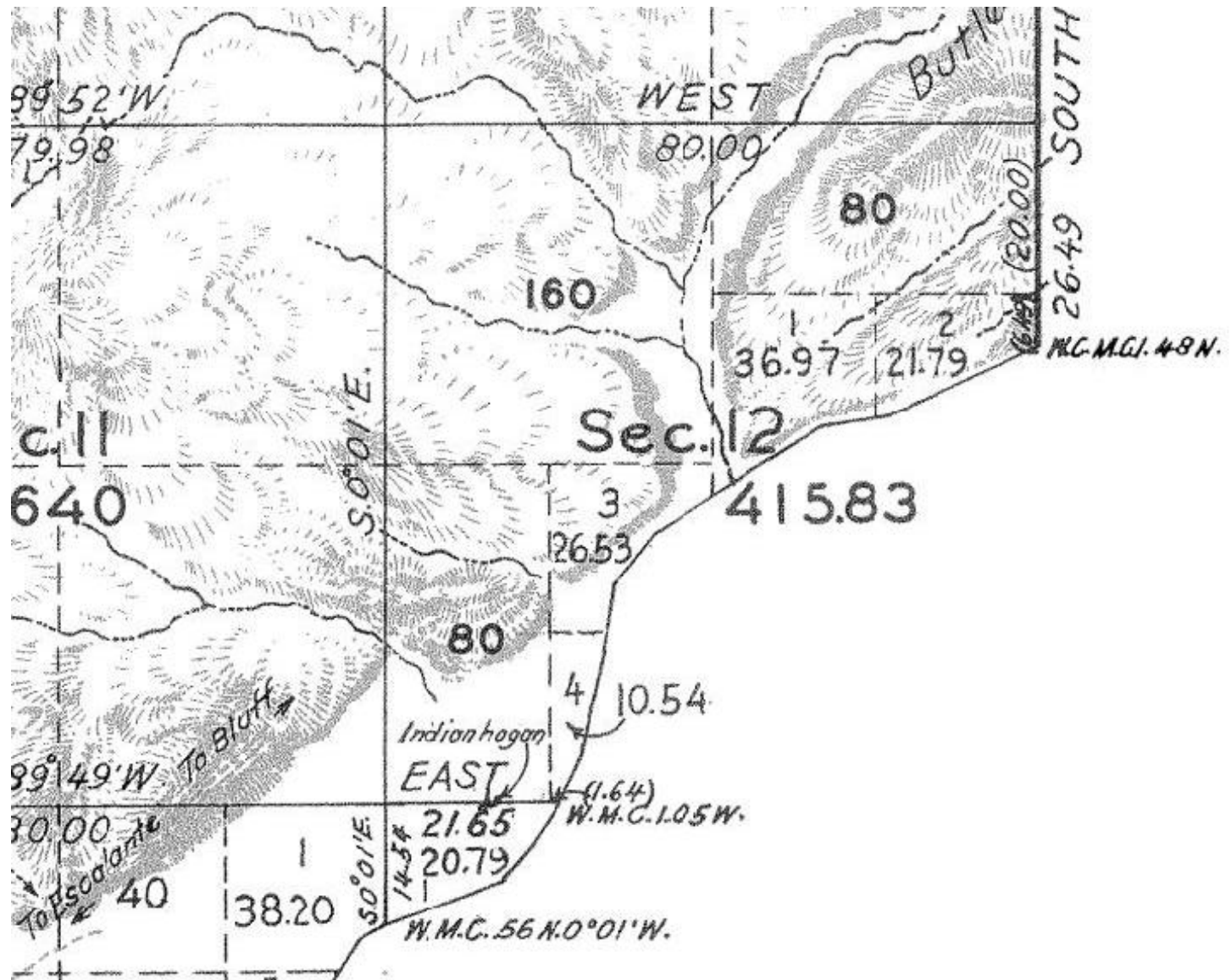


Fig 3-42

Extension of lotting in an elongated section.

- On an actual plat an area will be returned for each lot and the section.

